

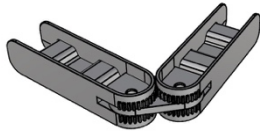


WOVEN IMAGE®

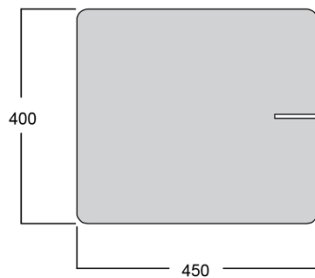
DESIGN DEPARTMENT - PRODUCT SPECIFICATION SHEET

ISSUE DATE: 3.4.20

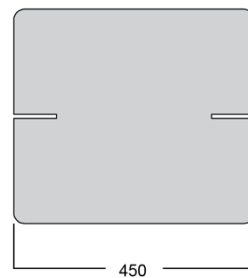
DESIGN NAME	DeskTop
DESIGNER:	Woven Image
ORIGIN:	Australia
COLOURS:	EchoPanel® 542 with charcoal pivot joiners EchoPanel® 633 with charcoal pivot joiners EchoPanel® 101 with charcoal pivot joiners EchoPanel® 454 with cream pivot joiners EchoPanel® 487 with cream pivot joiners EchoPanel® 384 with cream pivot joiners
PANEL DIMENSIONS:	450mm (+/- 2mm) x 400mm (+/- 2mm)
PANEL THICKNESS:	24mm +/- 7% (EchoPanel®)
WEIGHT:	approx. 2kg per kit
CONTENTS:	3 x Panel Pieces (100% PET (60% recycled)) 2 x Pivot Joiners (ABS Plastic)



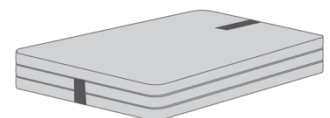
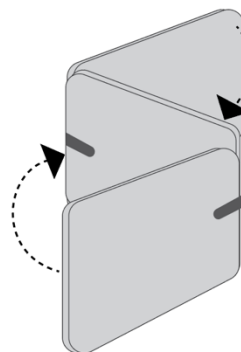
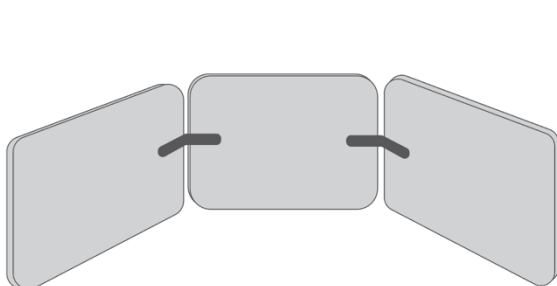
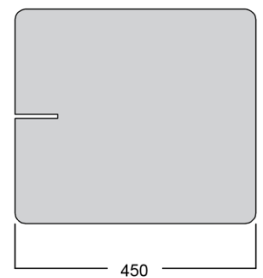
2 x Pivot Joiners




2 x End Pieces



1 x Middle Piece



PERFORMANCE AS PER ECHOPANEL® 24MM:

COLOUR FASTNESS TO LIGHT:	ISO 105-B02-1994 Rating: 6-7
FIRE TEST:	ISO 9705: Group 1 ASTM E84 Unadhered: B or Class 2 BS EN 13501.1: Classification B-s1, d0
FABRIC CARE:	Blot excess spills from material quickly. Wipe with a damp cloth. If stain persists, apply small quantities of carpet or upholstery shampoo solution with a damp cloth. Blot well with a clean cloth after each application of the solution. Warning, avoid excessive amounts of water. Ensure adequate ventilation if the product is likely to be subject to excessive moisture.
SOUND ABSORPTION:	AS ISO 354 – 2006 NRC Value: 0.65 (with no air gap) NRC Value: 0.75 (with 20mm air gap) NRC Value: 0.85 (with 50mm air gap)
VOC EMISSIONS:	ASTM D5116 Rate: < 0.02 mg/m ² /hr (7 days) 
ENVIRONMENTAL:	EchoPanel® achieves GreenTag Certification GreenRate: Level A