



# Clouds

FilaSorb™ 12

acoufelt  
making quiet

# Product Detail

<b>Application</b>	Ceiling
<b>Composition</b>	100% polyester
<b>Material</b>	FilaSorb™
<b>Recycled content</b>	60% min
<b>Dimensions</b>	Circle – 1200 x 1200mm Hexagon – 1200 x 1385mm Rectangle – 1200 x 1400mm
<b>Thickness</b>	12mm +/- 10%
<b>Qty per carton</b>	Circle – 2 Rectangle – 1 Hexagon – 2

# QuickShip

QuickShip Standard (Made to Order)



Our standard made to order products have an approx. **2-3 week** lead time from payment and order confirmation.

# Technical Data

<b>Fire rating</b>	AS/ISO 9705.1, Group 1 ASTM E84-17a, Class A EN 13501-1: 2019, B-s1, d0
<b>Indoor air quality</b>	SCS-EC10.3-2014 v4.0 meeting standard CDPH/EHLB Standard Method v.1.2-2017, ≤ 0.5mg/m <sup>3</sup>
<b>Light fastness</b>	ISO 105-B02, 6-7

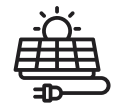
# Sustainability



Made from 60% min. recycled content



Red List Free Declare Label



Generated using 40% solar energy



Recyclable at end-of-life



Total VOC's less than 0.5 mg/m<sup>3</sup> (3<sup>rd</sup> Party Verified)

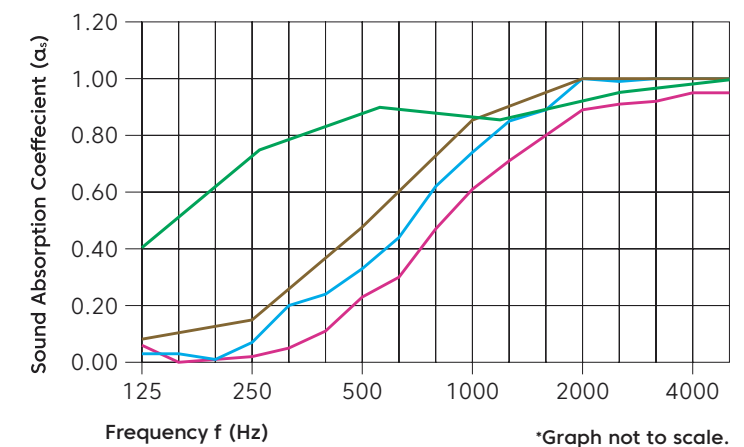


Phenol & formaldehyde free



# Acoustic Performance

<b>Test method</b>	ISO 354-2006
<b>Results</b>	NRC 0.45 (no air gap) NRC 0.54 (12mm air gap) NRC 0.64 (20mm air gap) NRC 0.85 (200mm air gap)



Frequency (Hz)	125	250	500	1000	2000	4000	NRC
α <sub>s</sub> no air gap	0.06	0.02	0.23	0.61	0.89	0.95	0.45
α <sub>s</sub> 12mm air gap	0.03	0.14	0.33	0.74	1.00	1.00	0.54
α <sub>s</sub> 20mm air gap	0.05	0.16	0.48	0.85	1.00	1.00	0.64
α <sub>s</sub> 200mm air gap	0.40	0.75	0.90	0.85	0.95	1.00	0.85

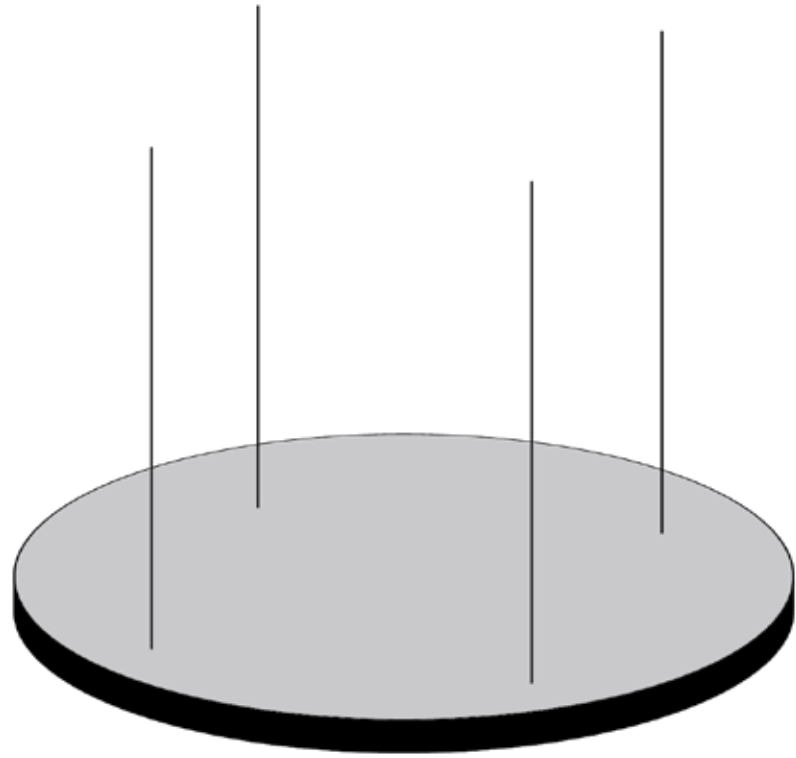
# Guarantees

Warranty against defects 20 years\*  
Light fastness warranty 20 years\*

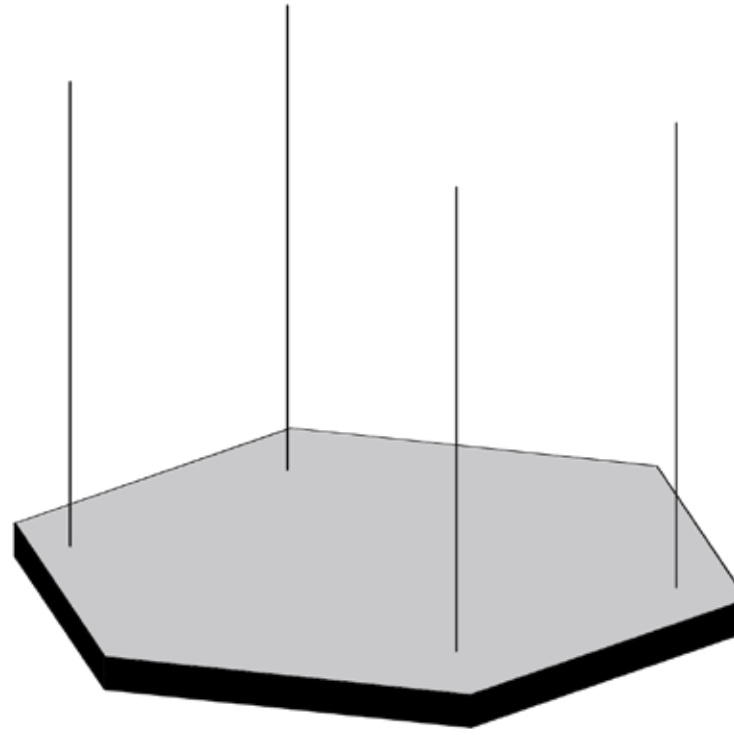
\*conditions apply

# Designs

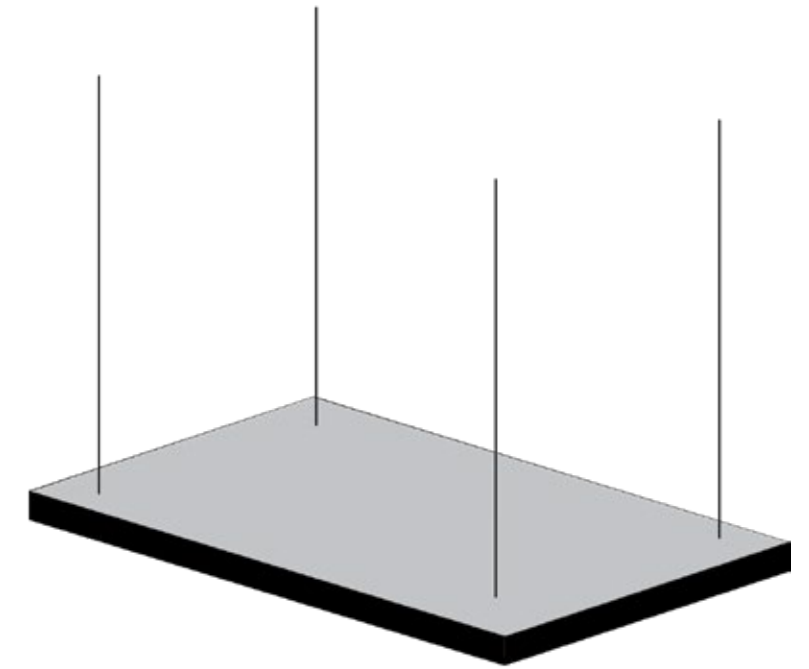
---



**Circle**  
Dimensions  
1200 x 1200mm



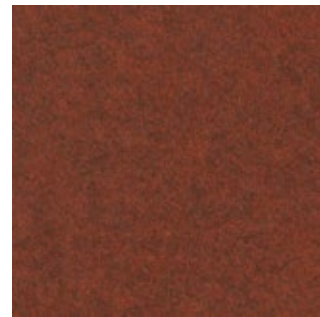
**Hexagon**  
Dimensions  
1200 x 1385mm



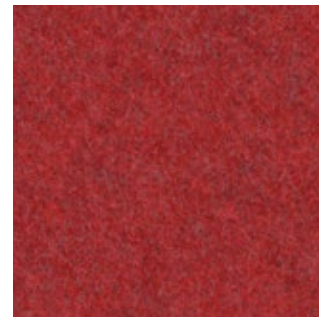
**Rectangle**  
Dimensions  
1200 x 1400mm

# Colorways

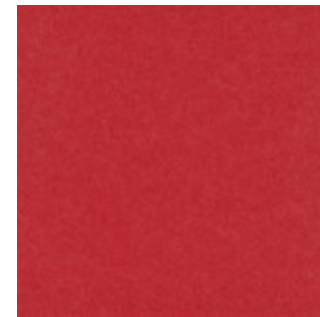
Light Reflectance Values (LRV), are a measure of the percentage of visible and usable light that is reflected from a surface when illuminated by a light source.



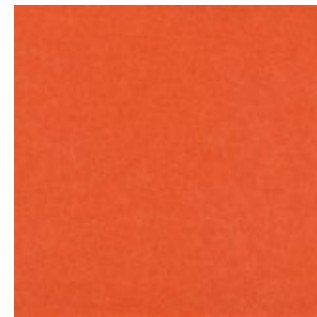
Peppercorn  
LRV - 8.50%



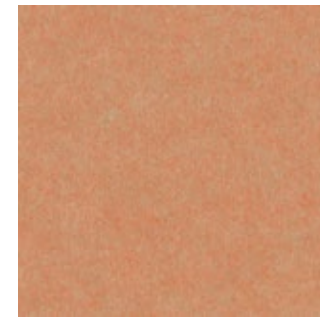
Currant  
LRV - 7.04%



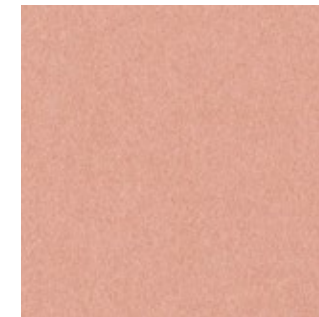
Lipstick Red  
LRV - 12.50%



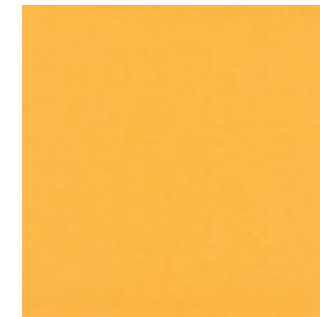
Carrot  
LRV - 20.00%



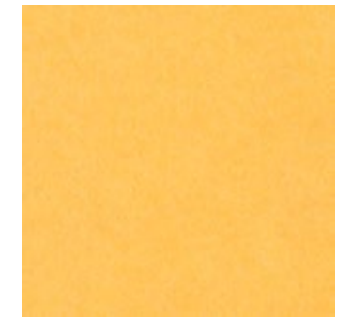
Peach  
LRV - 29.00%



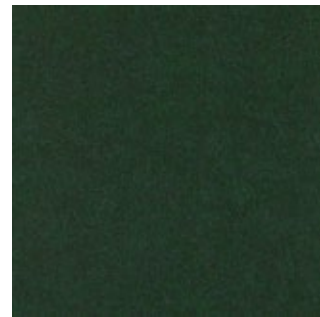
Flamingo  
LRV - 37.54%



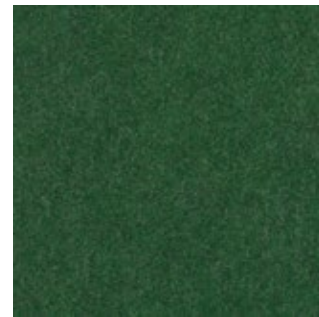
Butter  
LRV - 62.00%



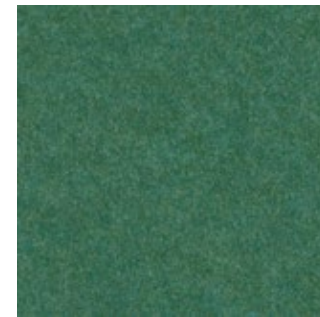
Popcorn  
LRV - 65.00%



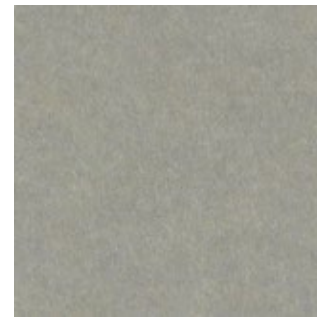
Kale  
LRV - 4.50%



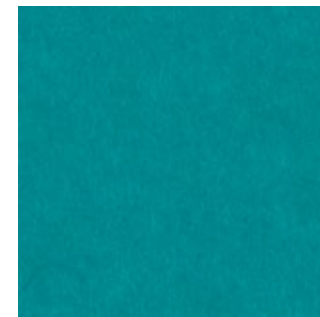
Oregano  
LRV - 8.80%



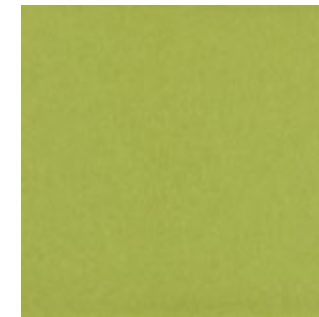
Thistle  
LRV - 13.00%



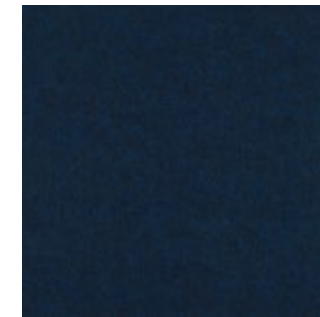
Pistachio  
LRV - 30.00%



Peacock  
LRV - 19.00%



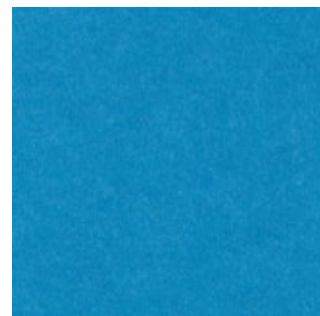
Wasabi  
LRV - 38.00%



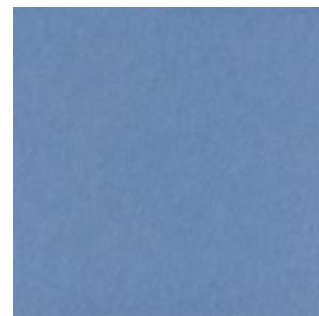
Midnight Blue  
LRV - 3.50%



Denim  
LRV - 6.00%



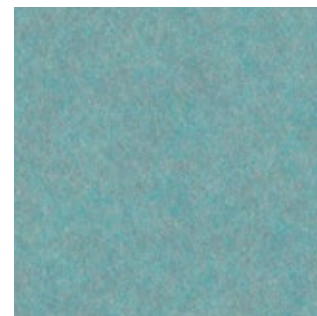
Azur  
LRV - 18.00%



Marine  
LRV - 25.00%



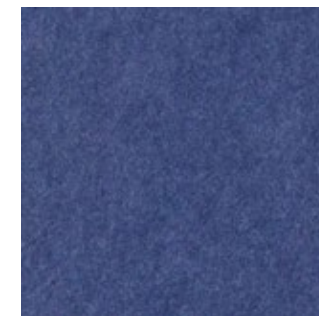
Periwinkle  
LRV - 36.00%



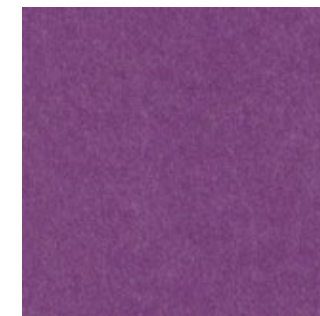
Sea Salt  
LRV - 28.56%



Lilac  
LRV - 39.00%



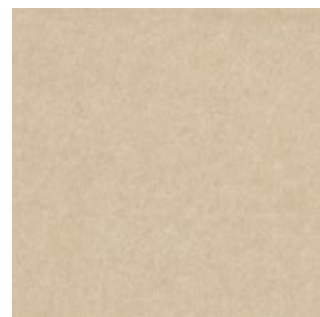
Iris  
LRV - 10.50%



Berry  
LRV - 12.00%



Pearl  
LRV - 54.00%



Ivory  
LVR - 40.00%



White  
LRV - 83.22%



Piano Black  
LRV - 3.00%



Charcoal  
LRV - 5.46%



Slate  
LRV - 12.50%



Grey  
27.00%



Metal  
LRV - 35.00%



Platinum  
LRV - 42.00%

# New Releases

---

## Available Feb 2023



Sencha  
LRV - 34.15%

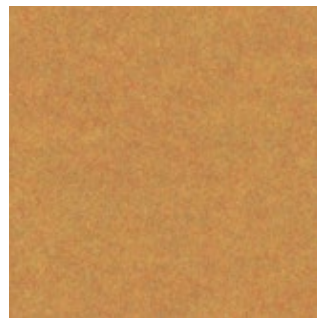


Umber  
LRV - 20.35%

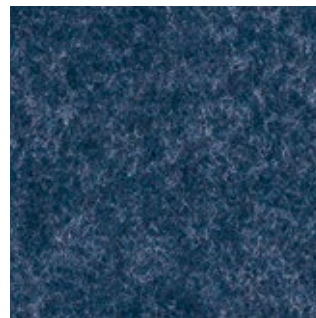


Walnut  
LRV - 12.14%

## Available Mar 2023



Turmeric  
LRV - 29.59%

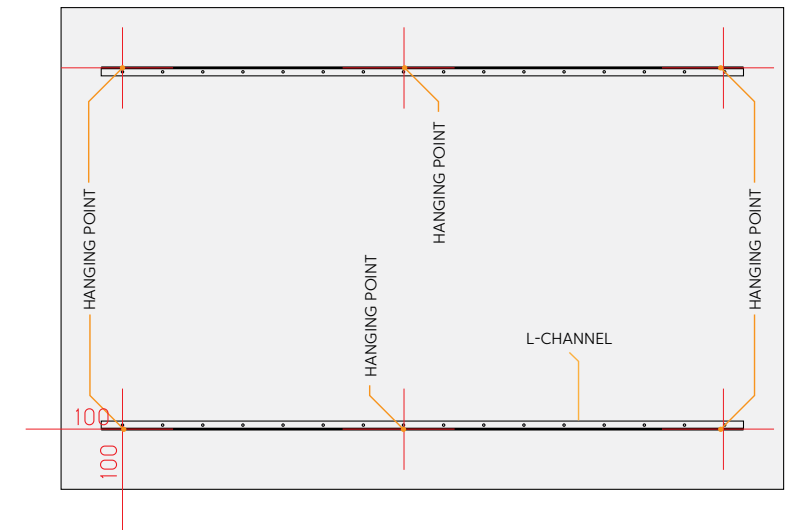
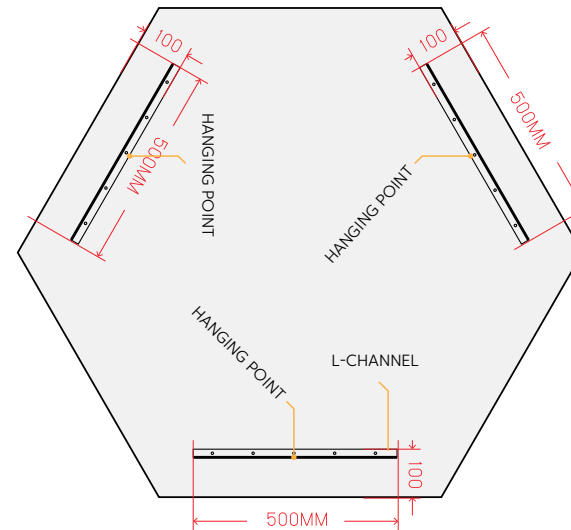
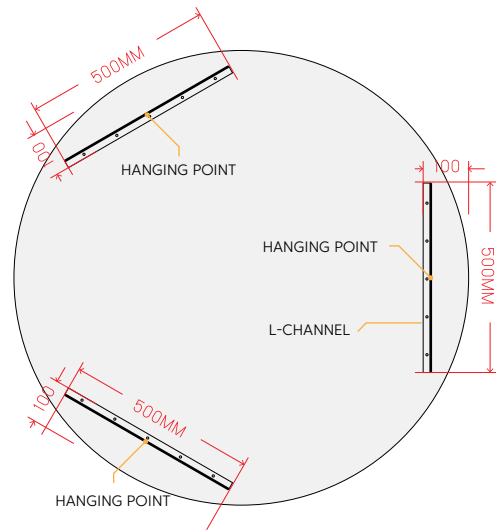
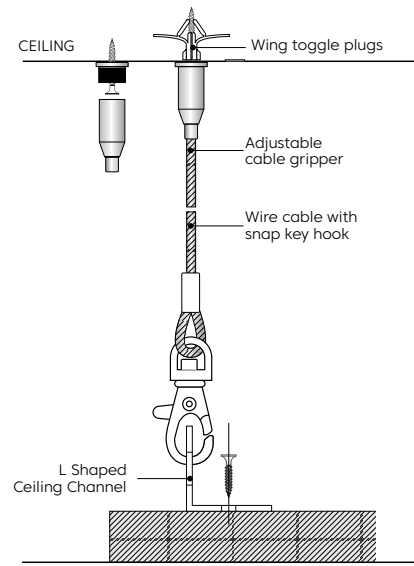


Granite  
LRV - 6.40%

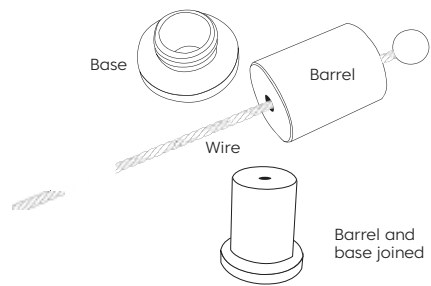


Almond  
LRV - 53.64%

# Mounting Methods



Cable gripper



Adjustable cable gripper with hook

