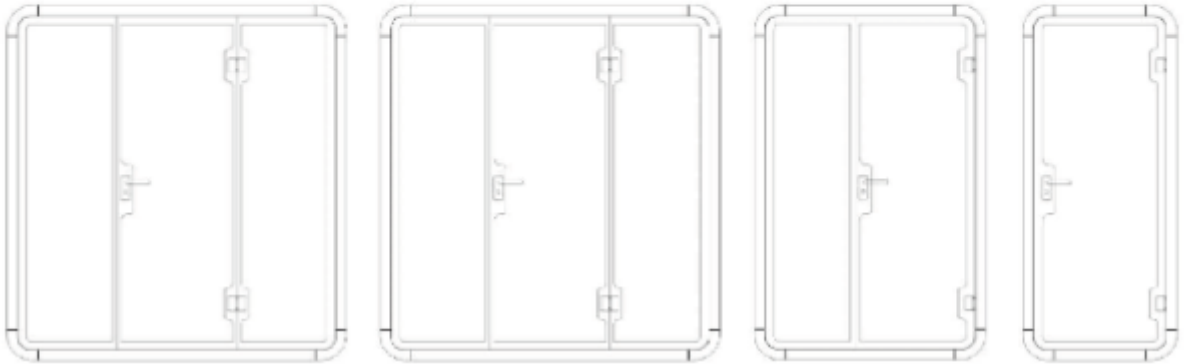
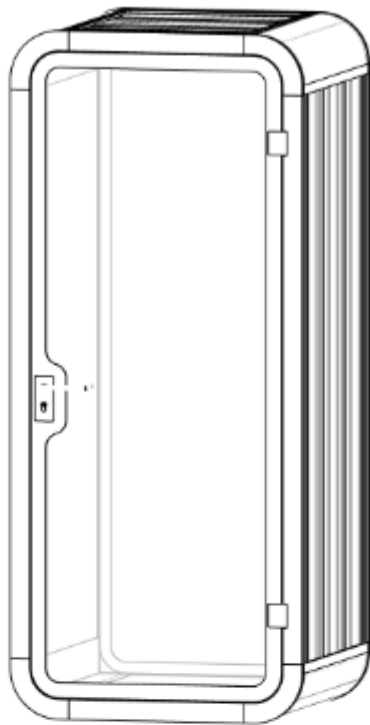


## High Performance, Architecturally Designed Acoustic Booths



# BUREAU



## Features

- Honeycomb structure panels to distort and reduce sound by up to 32 decibels.
- Matrix sound distortion.
- A ventilation fan refreshes internal air every 3 minutes – 120m<sup>3</sup>/hr (33L/second).
- 3000K sensor lighting.
- Aerospace grade, powder coated aluminium frames.
- 10mm thick tempered safety glass.
- Plug-and-play technology.
- Optional VBreathe auto-sanitising unit.
- Custom colour, branding, furniture and layout options.
- Optional voice AI integration, LCD screens and smart speakers.



Capacity



Sensor lighting

## SMALL BOOTH

### Specifications

Internal dimensions	840w x 900d x 2140h
External dimensions	1000w x 940d x 2300h
Seating	1 person
Weight	246kg
Recyclable materials	60%
Standard lead-time	8-10 weeks
Standard warranty	5 years
Package dimensions	2270w x 540d x 1060h

All dimensions in mm.

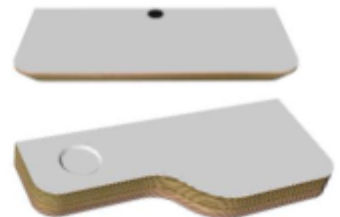
### Construction

Side wall panels:	Proprietary carbon polymer
Front & rear:	10mm thick clear safety glass or wall panel
Door:	10mm thick clear safety glass
Frame:	Aerospace grade, powder coated aluminium
Sound panelling:	Woven polyethylene terephthalate

### Standards

PET fire tested, ISO 9001, AS/NZS 2208:1996 tempered glass, SGS certified materials

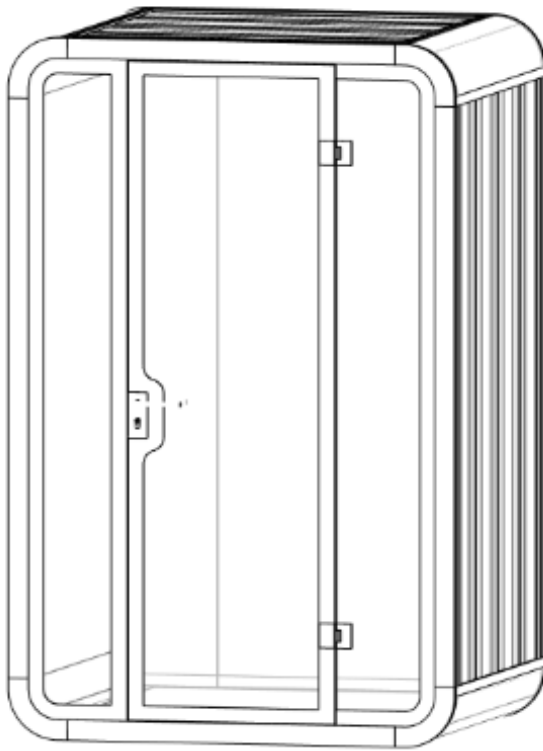
### Standard Furnishings



### Standard Colour Options

Booth								
Glass Edge								
Interior								
	BZ910	S218	S169	S201	S211	S235	S214	S115

# BUREAU



## Features

- Honeycomb structure panels to distort and reduce sound by up to 32 decibels.
- Matrix sound distortion.
- Two ventilation fans refresh internal air every 3 minutes – 306m<sup>3</sup>/hr (85L/second).
- 3000K sensor lighting.
- Aerospace grade, powder coated aluminium frames.
- 10mm thick tempered safety glass.
- Plug-and-play technology.
- Optional VBreathe auto-sanitising unit.
- Custom colour, branding, furniture and layout options.
- Optional voice AI integration, LCD screens and smart speakers.



Capacity



Sensor lighting

## MEDIUM BOOTH

### Specifications

Internal dimensions	1340w x 1200d x 2140h
External dimensions	1500w x 1240d x 2300h
Seating	2 person
Weight	387kg
Recyclable materials	60%
Standard lead-time	8-10 weeks
Standard warranty	5 years
Package dimensions	2270w x 900d x 1050h

All dimensions in mm.

### Construction

Side wall panels:	Proprietary carbon polymer
Front & rear:	10mm thick clear safety glass or wall panel
Door:	10mm thick clear safety glass
Frame:	Aerospace grade, powder coated aluminium
Sound panelling:	Woven polyethylene terephthalate

### Standards

PET fire tested, ISO 9001, AS/NZS 2208:1996 tempered glass, SGS certified materials

### Standard Furnishings



### Standard Colour Options

Booth  
Glass Edge  
Interior



BZ910



S218



S169



S201



S211



S235

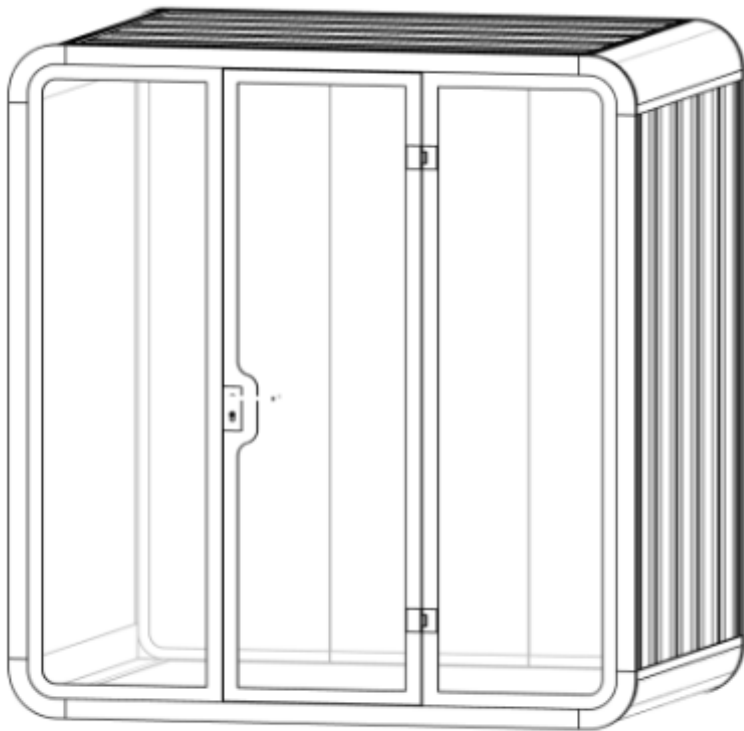


S214



S115

# BUREAU



## Features

- Honeycomb structure panels to distort and reduce sound by up to 32 decibels.
- Matrix sound distortion.
- Three ventilation fans refresh internal air every 3 minutes – 459m<sup>3</sup>/hr (127.5L/sec).
- 3000K sensor lighting.
- Aerospace grade, powder coated aluminium frames.
- 10mm thick tempered safety glass.
- Plug-and-play technology.
- Optional VBreathe auto-sanitising.
- Custom colour, branding, furniture and layout options.
- Optional voice AI integration, LCD screens and smart speakers.



Capacity



Accessible options



Sensor lighting

## LARGE BOOTH

### Specifications

Internal dimensions	2040w x 1500d x 2140h
External dimensions	2200w x 1540d x 2300h
Seating	4 person
Weight	562kg
Recyclable materials	60%
Estimated lead-time	8-10 weeks
Standard warranty	5 years
Package dimensions	2270w x 1080d x 1100h
All dimensions in mm.	

### Construction

Side wall panels:	Proprietary carbon polymer
Front & rear:	10mm thick clear safety glass or wall panel
Door:	10mm thick clear safety glass
Frame:	Aerospace grade, powder coated aluminium
Sound panelling:	Woven polyethylene terephthalate

### Standards

PET fire tested, ISO 9001, AS/NZS 2208:1996 tempered glass, SGS certified materials

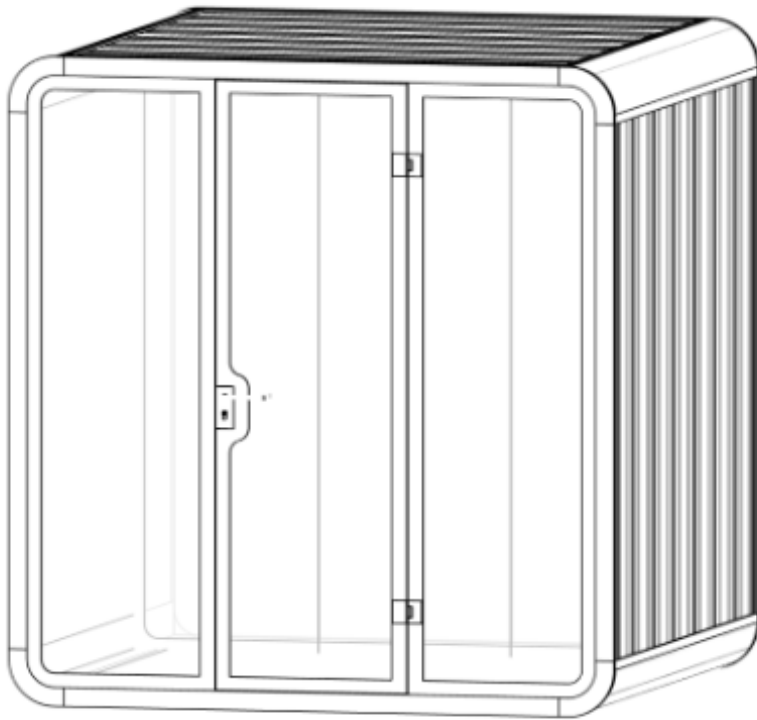
### Standard Furnishings



### Standard Colour Options

Booth								
Glass Edge								
Interior								
	BZ910	S218	S169	S201	S211	S235	S214	S115

# BUREAU



## Features

- Honeycomb structure panels to distort and reduce sound by up to 32 decibels.
- Matrix sound distortion.
- Three ventilation fans refresh internal air every 3 minutes – 459m<sup>3</sup>/hr (127.5L/sec).
- 3000K sensor lighting.
- Aerospace grade, powder coated aluminium frames.
- 10mm thick tempered safety glass.
- Plug-and-play technology.
- Optional VBreathe auto-sanitising.
- Custom colour, branding, furniture and layout options.
- Optional voice AI integration, LCD screens and smart speakers.



Capacity



Accessible options



Sensor lighting

## EXTRA-LARGE BOOTH

### Specifications

Internal dimensions	2040w x 2100d x 2140h
External dimensions	2200w x 2140d x 2300h
Seating	6 person
Weight	680kg
Recyclable materials	60%
Standard lead-time	8-10 weeks
Standard warranty	5 years
Package dimensions	2270w x 1080d x 1100h

All dimensions in mm.

### Construction

Side wall panels:	Proprietary carbon polymer
Front & rear:	10mm thick clear safety glass or wall panel
Door:	10mm thick clear safety glass
Frame:	Aerospace grade, powder coated aluminium
Sound panelling:	Woven polyethylene terephthalate

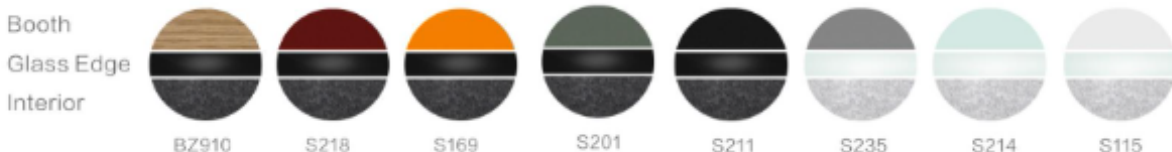
### Standards

PET fire tested, ISO 9001, AS/NZS 2208:1996 tempered glass, SGS certified materials

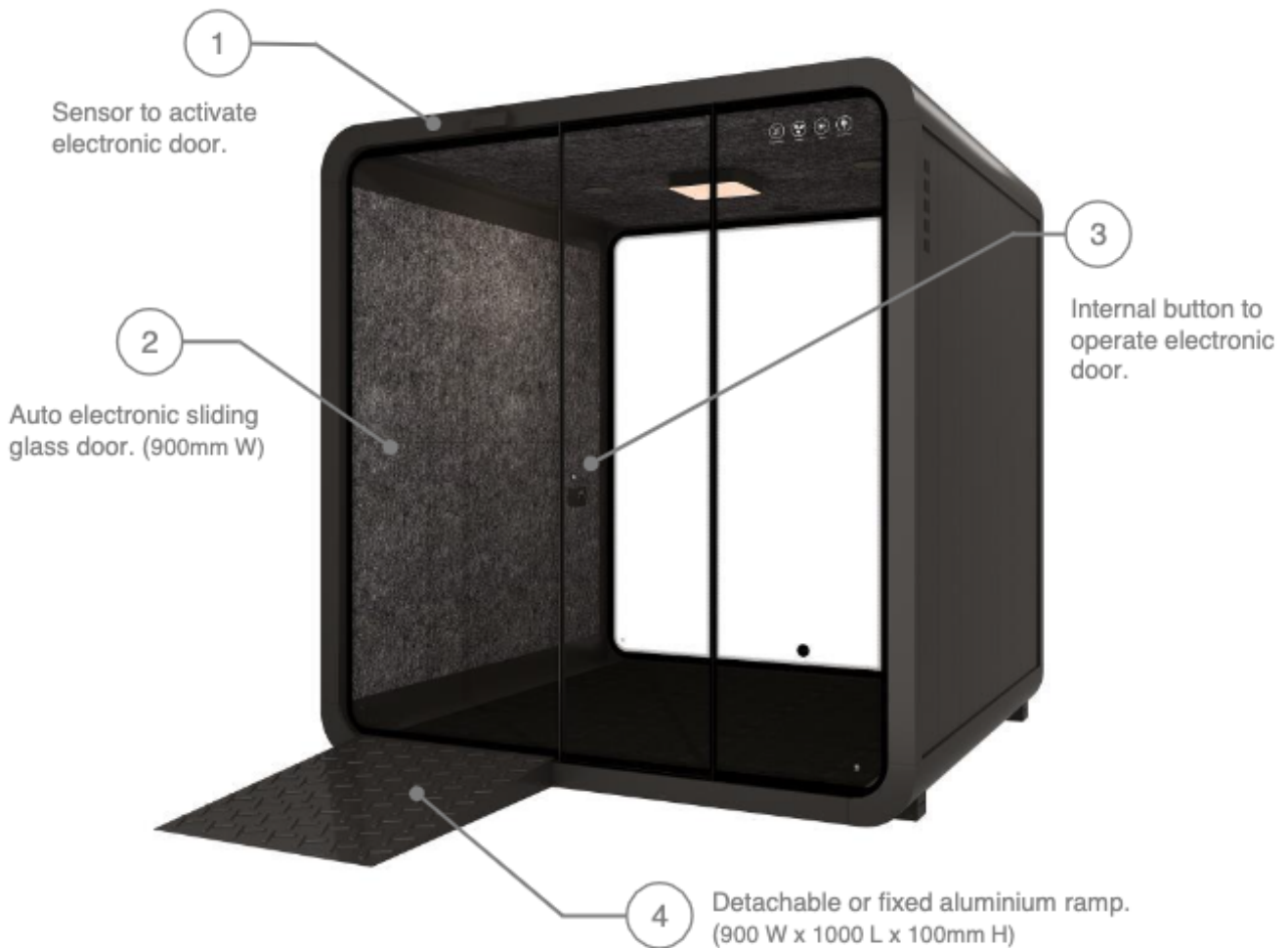
### Standard Furnishings



### Standard Colour Options



# BUREAU



Capacity



Accessible options



Sensor lighting

## ACCESSIBLE BOOTH

We designed our booths so that everyone can use them and benefit from them. Accessibility need not be an impediment to experiencing the acoustic, soundproof environment that our booths provide.

Our accessible booth is available in sizes **Large** and **Extra-Large** and in our full range of colours and finishes.

Features include a detachable or fixed ramp and an automatic sliding glass door to facilitate convenient and independent access for users of wheelchairs or mobility aids.

We can then provide a range of fixed or foldable furniture solutions to accommodate your requirements.

### Standard Colour Options

Booth  
Glass Edge  
Interior



BZ910



S218



S169



S201



S211



S235



S214



S115

# ENVIRONMENTAL CONSIDERATIONS

Minimising our environmental impact has been a principal consideration at Bureau since the company began.

It's the primary reason we enjoy creating a re-usable and portable product that will not be discarded following a tenancy de-fit.

It's also the reason we utilise premium grade

aluminium and glass as the key components in the manufacturing of our booths – two of the most effectively recycled materials available.

We also recognise these values within our workplace, with each office operating on solar power and close to 100% of employees cycling to work at least once a week.



## High quality and reusable

Quality materials and portability ensure a long useful life beyond a single tenancy.



## Flat-packed and recyclable

Space efficient lightweight cardboard packaging.



## Energy efficient lights and fans

Less than 30w power draw. Motion sensors reduce consumption.



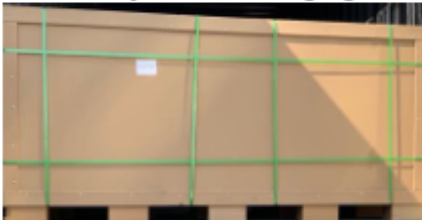
## Recyclable materials

Made primarily from aluminium and glass for enhanced recyclability.

### Energy Efficient



### Recyclable Packaging



### Environmental Response:

- Highly efficient LED lighting.
- 100% recyclable aluminium frame and tempered glass panels.
- Reinforced cardboard packaging that is 100% recyclable and lightweight.
- Motion-sensor lighting and ventilation to minimise power consumption when not in use.
- Re-usable meeting space that can be relocated within a tenancy or relocated and re-assembled in another tenancy.
- Modular construction allows for individual parts to be replaced in the event of damage instead of replacing the complete unit.
- Flat-packed for efficient shipping and transportation.
- Lightweight carbon polymer panels to reduce weight and shipping impact.

## RELATED CERTIFICATIONS



### ISO 14001:2015

An environmental standard which ensures that our products are produced in an environmentally friendly way.



### FSC Certified

All of our wood products (primarily furniture) is all sourced from FSC certified, sustainable forests.



### ISO 9001

This is a quality standard that ensures the highest standards of production quality creating minimal waste or defects.

# ELECTRICAL SYSTEM



Our booths have a built-in, quick install electrical system.

Once the booths are assembled on site they simply plug into a regular electrical power point that will supply power for lighting, ventilation and internal power points.

The booths are supplied as standard with two USB-A ports and one country specific power point however there is the option for provision of up to three power points if required.

Lighting and ventilation are operated via internal manual switches or via optional motion sensors.



## TECHNICAL SPECIFICATIONS

	Small	Medium	Large	Extra-Large
Lighting	6W 3000k, CRI95+ LED	16W 3000k, CRI95+ LED	16W 3000k, CRI95+ LED	16W 3000k, CRI95+ LED
Fans per booth	1 (4.8W)	2 (9.6W)	3 (14.4W)	3 (14.4W)
Airflow	120m <sup>3</sup> /hr (33L/second)	306m <sup>3</sup> /hr (85L/second)	459m <sup>3</sup> /hr (127.5L/sec)	459m <sup>3</sup> /hr (127.5 L/sec)
Power outlets	1 country specific power outlet standard in all booths (customisable up to 3)			
USB ports	2 USB-A ports standard in all booths			
Power usage	10.8W	15.6W	30.4W	30.4W
Sensor lighting	Optional	Optional	Optional	Optional
Sensor fans	Optional	Optional	Optional	Optional





# SANITISING OUR BOOTHS

## Peace of mind with your peace and quiet.

In each location that our booths are installed there is a common outcome – they are in constant demand by a multitude of different users.

From the outset, acoustic performance, user comfort and safety have been paramount to the success of our product however, the threat of the COVID-19 virus has

heightened our awareness regarding the importance of our booth's safety performance.

In a direct response, Bureau has now partnered with VBreathe, also an Australian company, who developed a purification unit to effectively filter then kill bacteria and viruses present in the air.

**VBreathe is the only air filtration unit in the world proven to kill 99.9% of the COVID-19 virus**

Clean & filtered air

Clean & hygienic surfaces

A comfortable interior environment



- VBreathe uses a patented combination of technologies that incorporates medical-grade HEPA filtration, VActive Gel with controlled evaporation, smart sensors and the Air Chain Control mobile app. The unit will effectively purify and detoxify the air in your interior environment.
- Eurofins Scientific (a worldwide laboratory testing service) determined VBreathe to be effective in reducing the common strain of the COVID-19 virus by 99.9%.
- Simply add the gel, plug the unit into one of the booth's USB ports and enjoy peace of mind with clean, germ free air.



# FIRE SAFETY

## We take fire safety very seriously.

The materials we use in the manufacture of our booths are subjected to rigorous testing and internationally recognised certification.

Our development team are continuously researching new methods to innovate and improve our product.

We will work collaboratively with you and your fire engineers and fit-out contractor to ensure that our booth installations are compliant.

Fire safety can only be assessed on a 'whole system' case-by-case basis so we cannot provide a universal response for all tenancies however we have put together some useful information to aid your decision making.

## Frequently Asked Questions

### Who installs the sprinkler systems?

Sprinkler systems must be installed by certified plumbers or fire consultants however we make sure there is a suitable access hole in the booths for installation.

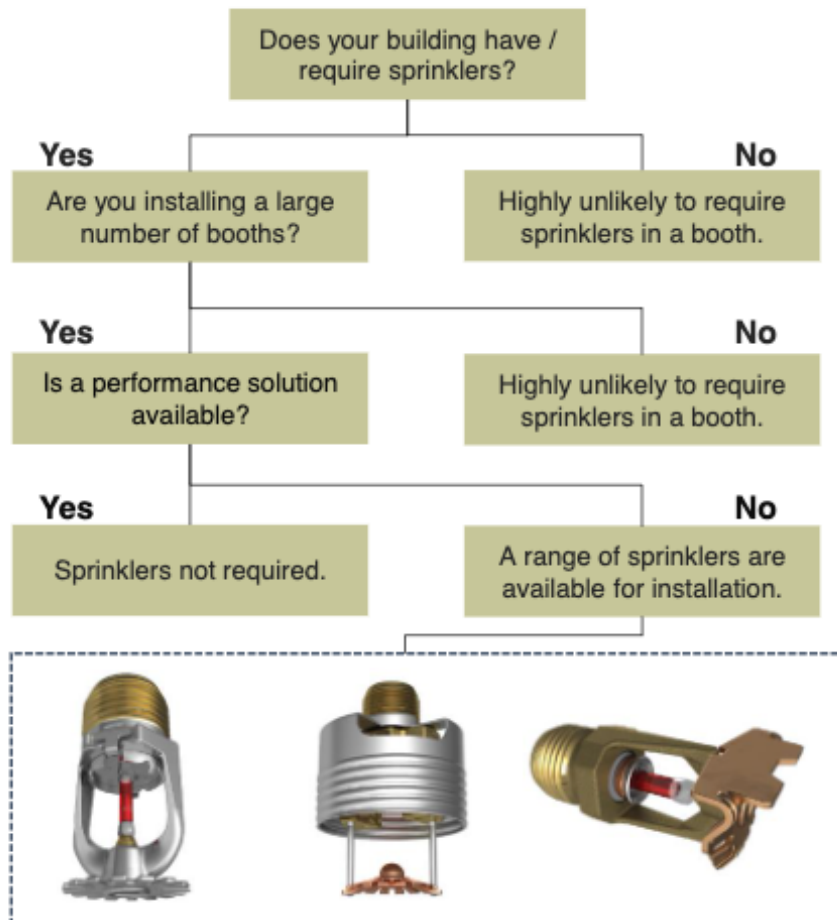
### How do sprinkler systems impact portability?

Moving the booths will require a new attachment to the water system which is a relatively quick and easy process.

### Do the sprinklers affect the acoustic performance?

Whilst some sound may escape through the access hole – we minimise this by ensuring the hole is cut to the exact dimension of the sprinkler system.

## Are sprinklers required?

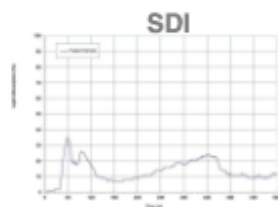
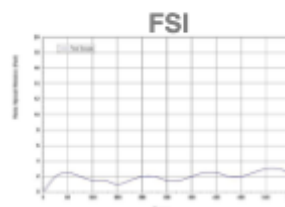


## RELATED TESTING

Class B certified panels

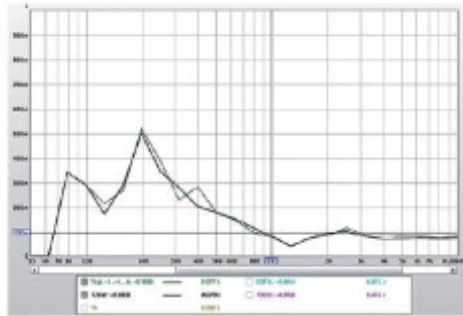
Fire growth rate index  
153.2

ASTM E84-19A tested  
Flame spread Index – 15  
Smoke Development Index - 185

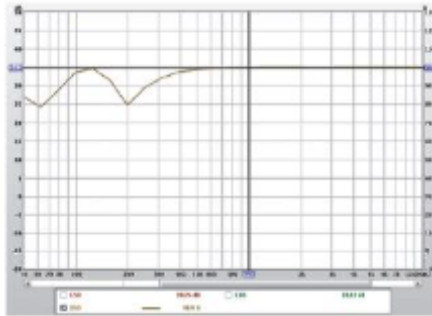


# ACOUSTIC TESTING

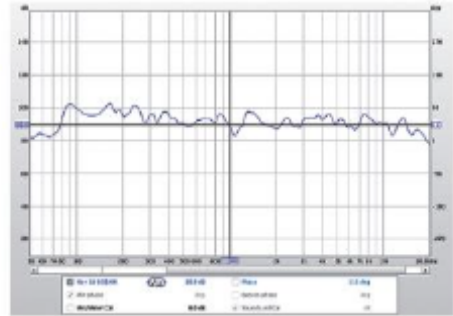
## Small Booth



Reverberation time

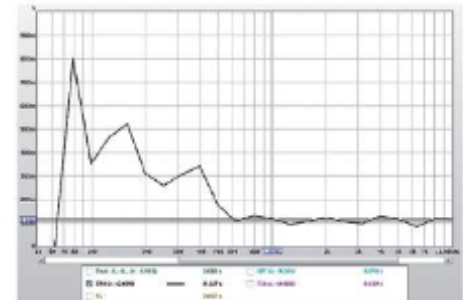


Speech intelligibility

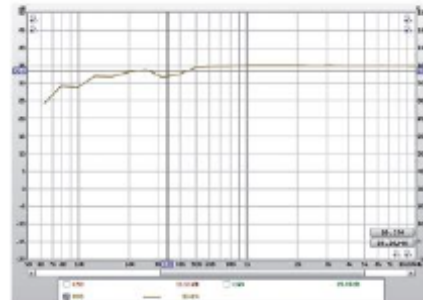


Frequency response

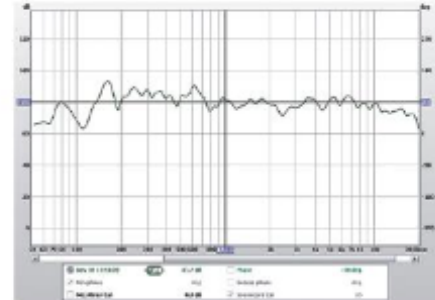
## Medium Booth



Reverberation time

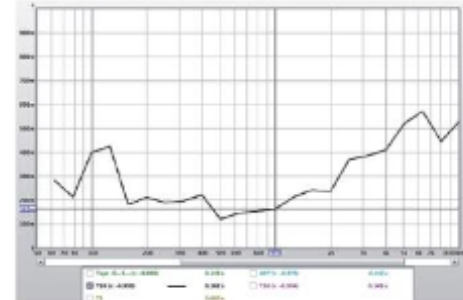


Speech intelligibility

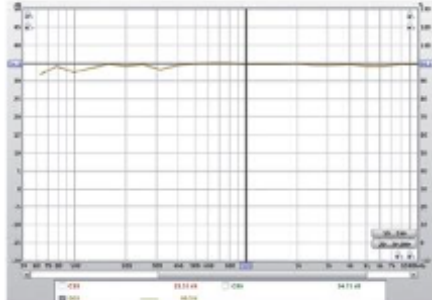


Frequency response

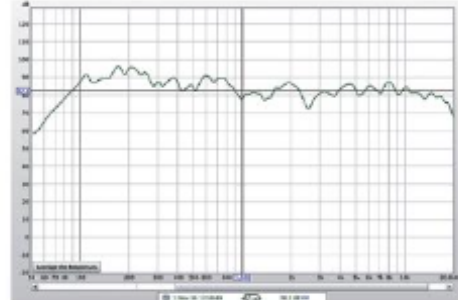
## Large Booth



Reverberation time

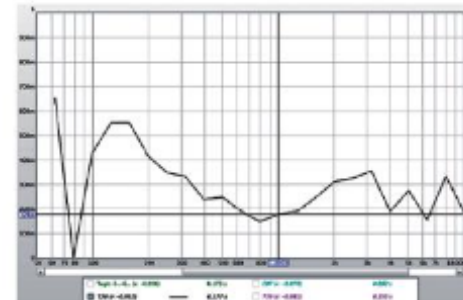


Speech intelligibility

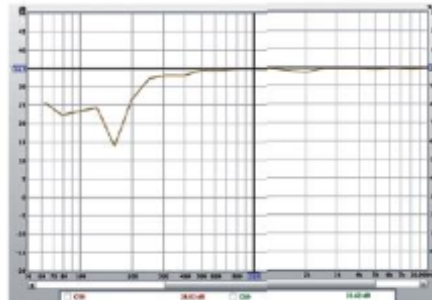


Frequency response

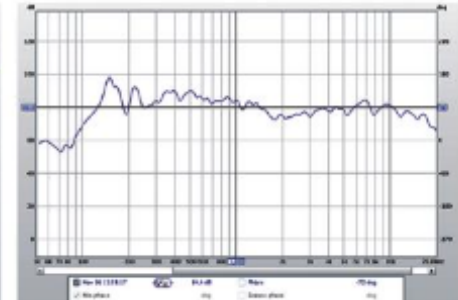
## Extra-Large Booth



Reverberation time



Speech intelligibility



Frequency response



# CERTIFICATIONS



AS/NZS 2208:1996



0412 215 269



INFO@ORCASOUNDPROOFING.COM.AU



WWW.ORCASOUNDPROOFING.COM.AU

Adelaide | Melbourne | Sydney  
AUSTRALIA

