



# Escape

QuietBack™ Carpet Tiles

acoufelt  
making quiet

## Product Detail

<b>Product</b>	Escape Carpet Tile
<b>Surface</b>	Floor
<b>Composition</b>	QuietBack™
<b>Material</b>	100% solution dyed nylon
<b>Style</b>	Multi-level textured loop pile
<b>Content</b>	QuietBack™ = >80% recycled PET content
<b>Tile Dimensions</b>	500 x 500mm
<b>Thickness</b>	10mm
<b>Tiles per box</b>	20

## Guarantees

<b>Wear Warranty</b>	20 years*
<b>Castor Chair Proof</b>	20 years*
<b>Anti-Static</b>	Lifetime*
<b>Colorfast</b>	20 years*
<b>Classification</b>	Commercial Extra Heavy Duty

\*conditions apply

## Technical Data

<b>Dimensional Stability</b>	ISO 17984, -0.05%
<b>Electrostatic Propensity</b>	AATCC 134 ≤ 1000V
<b>Light Fastness</b>	ISO 105-B02, 6-7
<b>Thermal Resistance</b>	0.2m² K/W
<b>Fire Test Method</b>	AS/ISO 9239.1-2003
<b>Critical Heat Flux</b>	Mean result 7.4kW/m²
<b>Smoke Deviation Rate</b>	Mean result 175%.min
<b>Fire Test Method</b>	ASTM E648 Class 1
<b>Critical Heat Flux</b>	Average, 0.54kWm²
<b>Smoke Density Test Method</b>	ASTM E662 (Flaming)
<b>Smoke Density Test Method</b>	450 or less
<b>Fire Test Method</b>	EN 13501-1:2019
<b>Critical Heat Flux</b>	Cfl
<b>Smoke Deviation Rate</b>	s1

## Environmental Attributes

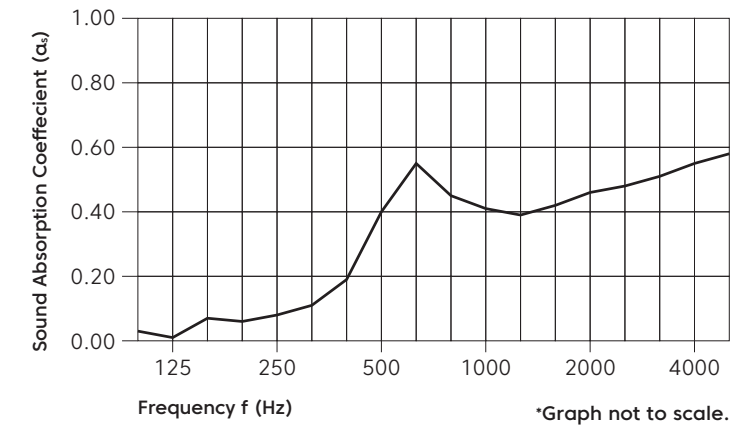
- One square meter diverts 36 x PET (600ml) drinking bottles from landfill
- LCB Red List Free
- Phenol & Formaldehyde Free
- Total VOC's 0.5 mg/m³ or less
- Recognised under LEED



Declare.

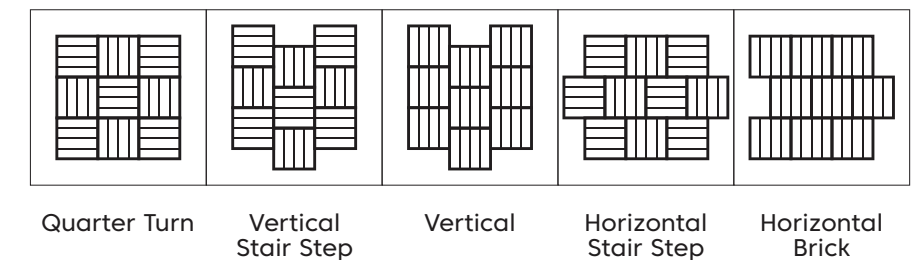
## Acoustic Performance

**Sound Absorption** ISO 354-2006, NRC 0.40



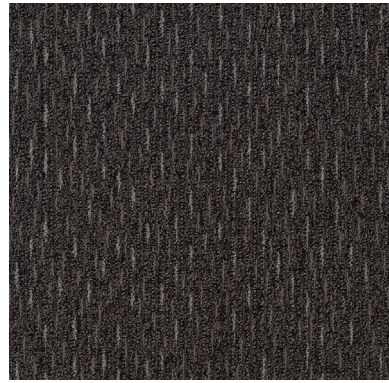
Frequency (Hz)	125	250	500	1000	2000	4000	NRC
α <sub>s</sub>	0.01	0.08	0.40	0.41	0.46	0.55	<b>0.40</b>

## Installation Method

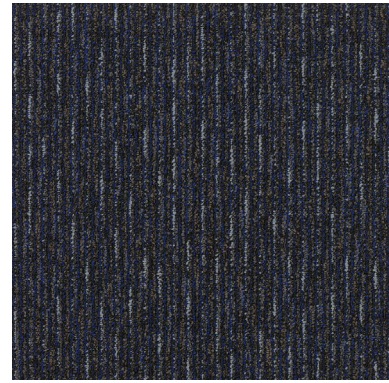


# Colorways

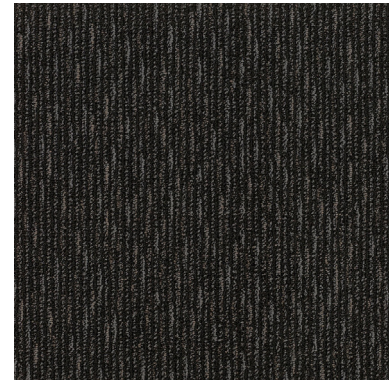
---



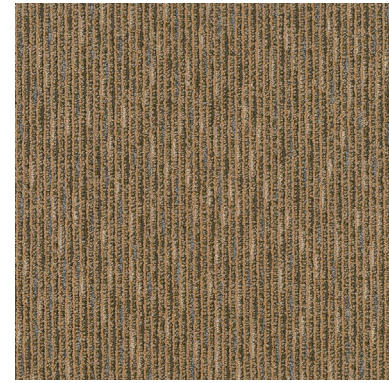
Granite



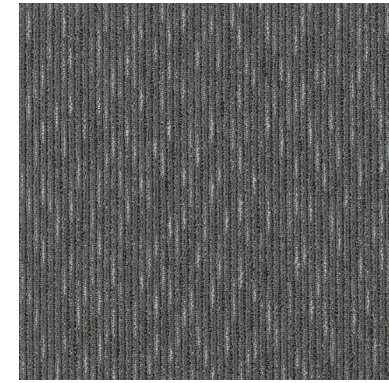
Boat House



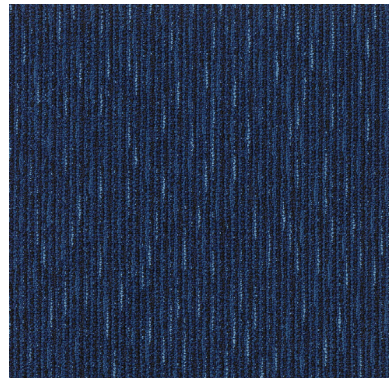
Castle



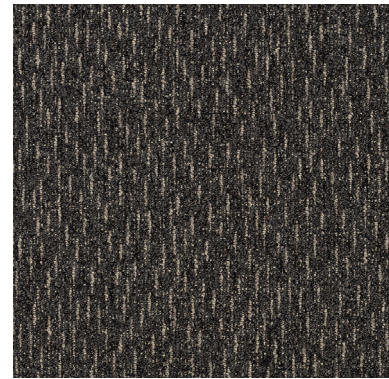
Parklands



Cascade



Ocean



Mountain