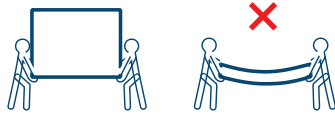
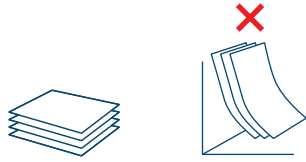


## HANDLING AND STORAGE

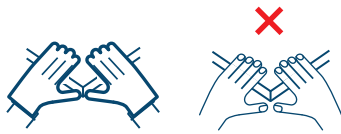
CARRY boxes and panels UPRIGHT.



STORE boxes and panels FLAT.



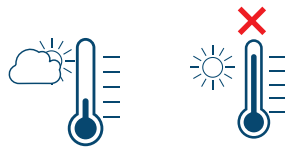
Wear GLOVES for handling LIGHT COLOURS.



Keep DRY and AVOID HUMIDITY.



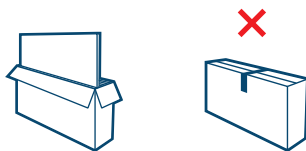
STORE in a COOL DRY place. NO DIRECT SUN. Avoid 65°C or greater.



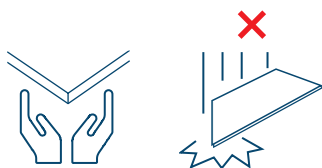
Keep all SURFACES CLEAN for storage and fabrication.



Upon delivery INSPECT all goods for order CORRECTNESS and DAMAGE.



PROTECT the EDGES.



This guide is presented in good faith to assist in the installation of GEM panels. Woven Image accepts no responsibility for installation actions taken or not taken.

This guide contains recommendations and it is not intended as an all-encompassing guide. A professional qualified installer is recommended for optimum results.

Please refer to Woven Image PTY LTD Terms of Trade.

## INSTALLATION

This guide is for a direct fix method with butt joining side by side.

### IMPORTANT NOTES

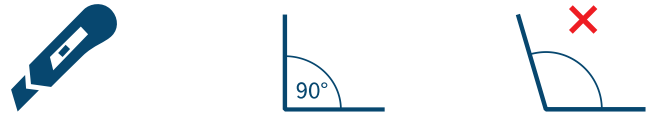
- Exact colour matching cannot be guaranteed between batches.
- Fibre mix and surface texture may vary.
- Please check that all panels are the correct colour, shape and batch number (if requested).
- Ensure all Woven Image stickers, located on the corner of the boards, face the same direction.
- No claims will be accepted after panels are installed.
- GEM is a non-woven composite material that can vary by up to 7% in thickness which is a natural characteristic of this product. The formed shape can therefore vary from panel to panel due to manufacturing tolerances.
- Ensure appropriate work safety regulations are met, e.g. protective clothing, eyewear and respiratory equipment.

### • SEE OVER FOR PATTERN MATCHING GUIDE.

### CUTTING / TRIMMING: BY MACHINE

- GEM can be cut using a plunge cut circular saw or bandsaw with a wave toothed blade and a metal guide.
- Do not use a serrated blade with side-set teeth.
- Trial cut on a scrap piece first as saws will behave differently on sheets of different thickness and density.
- Feed against the rotation of the blade or tool using a slow, consistent feed rate to prevent overheating.
- A fast feed can cause frictional heat which can melt or fuse the heated contact points with a saw blade.

### CUTTING / TRIMMING: BY HAND



- Ensure the blade is inserted into the panel at 90° to the surface to ensure square edges and best results for butt joints.
- Ensure the blade is sharp and not too long or flexible to avoid skew cuts.
- Replace the blade often to maintain sharpness.



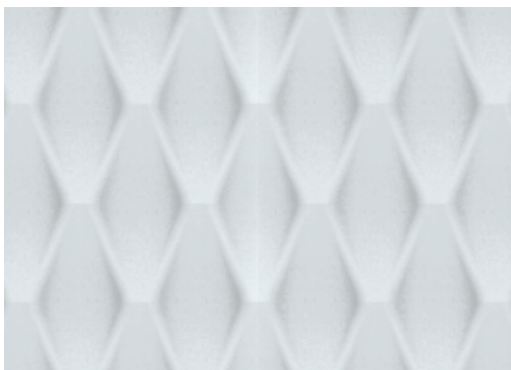
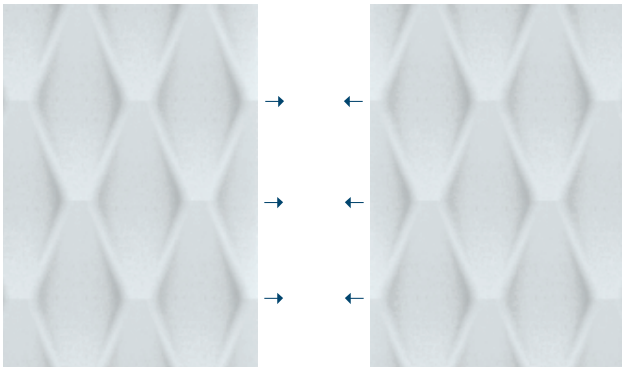
- For best results, use multiple cuts and light pressure.
- Keep flat and use a backing mat.
- Use a secure straight edge for straight cuts.

## FIXING AND ADHESIVES

- Ensure the wall or ceiling surface is clean and free of dust or imperfections that could prevent adhesion. Industry standard of drywall Level 3 is recommended.
- GEM can be direct fixed with a commercial adhesive.
- It's the installer's responsibility to ensure the adhesive used is appropriate for the product and substrate it is being fixed to.
- Always follow the adhesive manufacturer's instructions and perform a test piece prior to proceeding.
- Prepare the site with a clean drop sheet.
- Panels may easily flex. To avoid creasing, ensure they are well supported by a minimum of two people.
- Place the panels face side down on the floor to apply adhesive.
- When positioning the panel to the substrate apply even, gentle pressure, ensuring to use minimum pressure at the edges.

## PATTERN MATCHING

- When working with a corner wall it is recommended to apply from the corner outwards to maintain a consistent pattern.
- To assist in accurate pattern matching on a continuous wall, GEM has been trimmed on all four edges with a straight blade.
- When butting panels together, ensure the peaks and valleys in the design meet as per the diagram below.



## GEM PANEL ALIGNMENT

GEM pattern repeats on all four sides allowing for side by side and double height applications.

## MAINTENANCE - CLEANING & CARE

- Remove dust with a light vacuum or duster.
- Remove dirt with a soft cloth or sponge and a solution of carpet or upholstery shampoo.
- Always use a soft damp cloth and blot dry.
- Test on a sample first.

For product specifications please visit [wovenimage.com](http://wovenimage.com)