



# ECHOPANEL<sup>®</sup>

WOVENIMAGE.COM



Invented and launched by Woven Image in 2004, EchoPanel® is the original decorative interior panelling solution, with acoustic qualities and eco-innovation at its core.

EchoPanel® reduces and controls reverberated noise in shared environments, making it ideal for use in a variety of commercial interior spaces including workplace, education and hospitality environments.

It is a streamlined product with a fabric-like finish, designed with dematerialisation in mind. Once it's been installed, there is no need to upholster, paint or protect it.

Pioneering the war against single-use plastic, EchoPanels® production uses post-consumer recycled PET bottles to create a superior upcycled product with a vast array of interior applications.

## EXTENSIVE PRODUCT RANGE

EchoPanel® offers the largest colour palette on the market. The solid colour remains consistent throughout the thickness of the panel, so you can cut, create and install without the need for edging or capping.

EchoPanel® also boast an extensive range of inspiring prints and precision cut designs, making it the go-to brand for creative Architects and Interior Designers.

Offered in 3 panel thicknesses; 24MM, 12MM and 7MM.

The 12MM and 7MM thicknesses are now available in larger panel sizes (2800MM x 1200MM<sup>1</sup>) for seamless floor to ceiling applications.

## APPLICATIONS

EchoPanel® is durable, lightweight, and easy to cut and install, making it ideal for a multitude of wall, ceiling and free-standing interior applications. Frequent installations include:

- Wall Panelling. Direct fix installation or create an air gap for greater acoustic performance.
- Feature Wall Tiling.<sup>2</sup>
- Ceiling Applications. Direct fix or suspended systems.
- Workstations. Its slender, pinnable nature enables it to be used as a double-sided division in a workstation.
- Free-Standing Partitioning Systems.<sup>3</sup> Ideal in the 24MM thickness.
- Hanging Pendants.<sup>3</sup> For dividing a space with privacy and acoustic control.

“ The 12mm and 7mm thicknesses are now available in larger panel sizes (2800MM x 1200MM) for seamless floor to ceiling applications. ”

In-house design for custom printing and precision cutting projects, offers endless possibilities when it comes to creating a bespoke designer look.

## ACOUSTIC CONTROL

Controlling reverberated noise is a crucial factor in creating comfortable and productive environments, be it a professional workplace, learning environment, social setting or retail space.

EchoPanel® is optimised for acoustic performance and has been independently tested, in accordance with AS ISO 354, to achieve a Noise Reduction Coefficient (NRC) rating to meet your projects acoustic requirements, be it a new building or interior refurbishment.

## DESIGNED FOR COMMERCIAL INTERIORS

EchoPanel® has undergone many forms of industry testing and complies with some of the world's highest mandatory standards.

Its fire-retardant properties have been developed so that it is an excellent performer in the safety arena. It holds first-class ratings in Australasian and International markets, achieving a Group 1 rating in the 'ISO 9705' full-scale room fire test. EchoPanel® 12MM has also been awarded a valuable 'GB 8624 B1 level', and the internationally recognised 'BS EN 13501.1: Classification B-s1, d0'.

<sup>1</sup> Manufacturing tolerances apply

<sup>2</sup> Refer to Woven Images Acoustic Tiles brochure or visit [wovenimage.com](http://wovenimage.com)

<sup>3</sup> Refer to Woven Images Space-Dividing brochure or visit [wovenimage.com](http://wovenimage.com)





# ECHOPANEL® ENVIRONMENTAL STORY

Dematerialisation, recycling, upcycling and life cycle management were, and still are, at the foundation of EchoPanels® design.

Made from 60% post-consumer waste, sourced from single-use PET bottles, EchoPanel® products are dedicated to the environment. Aside from saving tonnes of plastic waste from our oceans and landfill, the PET is converted into EchoPanel® which boasts a 10-year life expectancy, after which the material is still 100% recyclable.

EchoPanel® is only printed with environmentally sensitive pigment inks to deliver excellent light fastness while remaining low-VOC, non-flammable and non-toxic.

Impressively, in 2018/19, Woven Image diverted in excess of 624 tonnes of PET plastic from landfill. This equates to over 31 million waste bottles being repurposed into EchoPanel® products annually.

To date, over 230 million 600ml PET bottles have been diverted from landfill to produce EchoPanel®.

## ENVIRONMENTAL CERTIFICATION

EchoPanel® achieves Global GreenTag™ certification (Green Rate Level A) with the maximum Product Health Declaration™: Platinum Health, for EchoPanel® plain colours.<sup>4</sup>



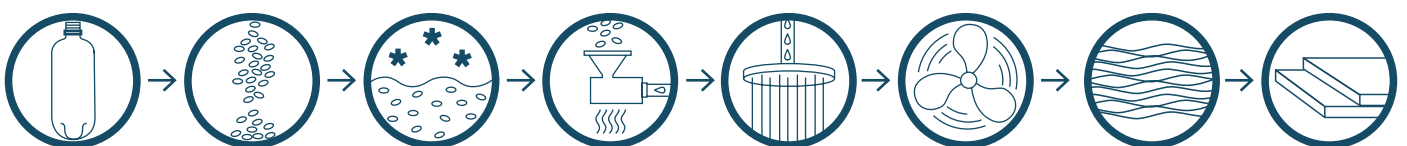
“ To date, over 230 million 600ml PET bottles have been diverted from landfill to produce EchoPanel® products. ”

Furthermore, EchoPanel® can secure credits under the following sustainable building rating tools:

- Green Star, as administered by Green Building Council Australia.
- WELL™ Building Standard, International WELL Building Institute.
- Leadership in Energy and Environmental Design (LEED v4.1).

EchoPanels® acoustic qualities, along with its extensive colour, design and customisation properties, offers designers the freedom to create stylish, unique and sustainable interior spaces.

## THE ECHOPANEL® PRODUCTION PROCESS



1. Soft drink and detergent bottles made from PET identified by ♻️ are collected from consumers.
2. Contaminants like lids and sticky labels are removed. Bottles are chipped into tiny pellets.
3. Pellets are washed and sanitised.
4. Pellets and colour are fed into a hopper. A heater at the base of the hopper melts the pellets to form a free flowing resin.
5. Resin is pumped through a sophisticated shower-rose device, known as a spinneret.
6. Cold air fans 'set' the fine fibres extruded from the spinneret.
7. Fibres are drawn and cut and are blended into a web.
8. Web is compressed to make panel board ready for use.

<sup>4</sup> Visit [wovenimage.com](http://wovenimage.com) for further information, or a copy of our full Environmental Product Declaration





# ECHOPANEL® COLOUR RANGE

---



EchoPanel® is available in a comprehensive range of neutral, mid tone and vibrant colours. Due to its unique manufacturing process, the colour remains consistent throughout the depth of the panel.

The standard 12MM range includes all 31 colours, with a selection of these colours also available in 7MM and 24MM thicknesses.

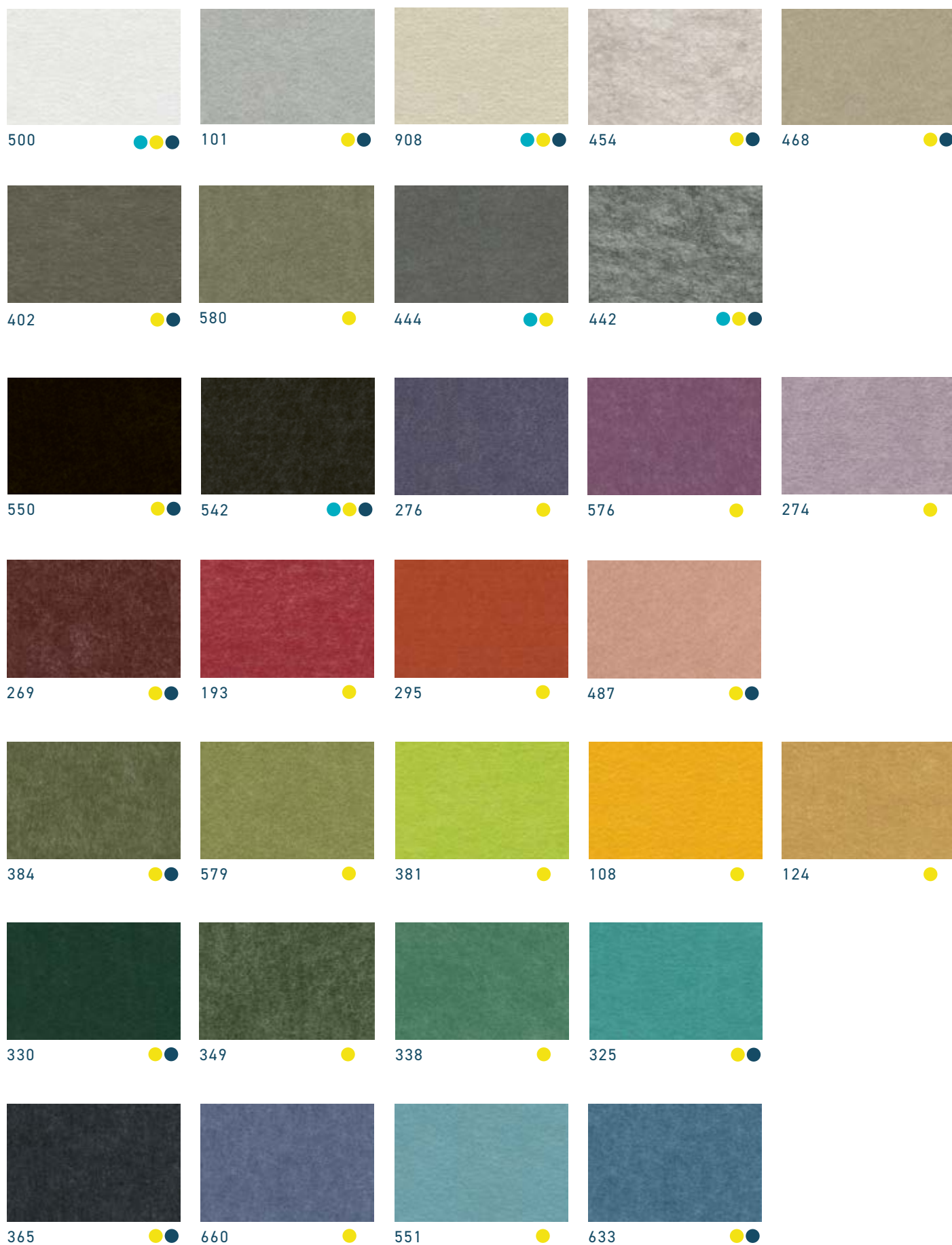
Colours shown are for reference only, please contact your local Woven Image representative for a sample prior to ordering.

Legend:

- Colours available EchoPanel® 7MM
- Colours available EchoPanel® 12MM
- Colours available EchoPanel® 24MM

# ECHOPANEL® COLOUR RANGE

---



## SPECIFICATIONS

PRODUCT	ECHOPANEL® 7MM	ECHOPANEL® 12MM	ECHOPANEL® 24MM
ORIGIN	MADE IN AUSTRALIA	MADE IN AUSTRALIA	MADE IN AUSTRALIA
COMPOSITION	100% PET (60% RECYCLED)	100% PET (60% RECYCLED)	100% PET (60% RECYCLED)
WEIGHT	1400g/m <sup>2</sup> (+/- 10%)	2400g/m <sup>2</sup> (+/- 10%)	3000g/m <sup>2</sup> (+/- 10%)
THICKNESS	7MM (+/- 7%)	12MM (+/- 7%)	24MM (+/- 7%)
PANEL DIMENSIONS	2800MM (+/-10MM) x 1200MM (+/-5MM)	2800MM (+/-10MM) x 1200MM (+/-5MM)	2400MM (+/-5MM) x 1820MM (+/-10MM)

## PERFORMANCE

COLOUR FASTNESS	ISO 105-B02-1994 RATING: 6-7	ISO 105-B02-1994 RATING: 6-7	ISO 105-B02-1994 RATING: 6-7
FIRE TEST	ISO 9705: GROUP 1, AS 1530.3, BS 476: PART 7 CLASS 2	ISO 9705: GROUP 1, AS 1530.3, GB 8624 B1, BS EN 13501.1: CLASSIFICATION- B-s1, d0	ISO 9705: GROUP 1 ASTM E84 UNADHERED: B or CLASS 2 BS EN 13501.1 CLASSIFICATION - Bs1, d0
SOUND ABSORPTION	AS ISO 354 - 2006 NRC VALUE: 0.25 (WITH NO AIR GAP) NRC VALUE: 0.45 (WITH 20MM AIR GAP) NRC VALUE: 0.70 (WITH 50MM AIR GAP)	AS ISO 354 - 2006 NRC VALUE: 0.45 (WITH NO AIR GAP) NRC VALUE: 0.60 (WITH 20MM AIR GAP) NRC VALUE: 0.75 (WITH 50MM AIR GAP)	AS ISO 354 - 2006 NRC VALUE: 0.65 (WITH NO AIR GAP) NRC VALUE: 0.75 (WITH 20MM AIR GAP) NRC VALUE: 0.85 (WITH 50MM AIR GAP)
VOC EMISSIONS (ECHOPANEL® UNPRINTED)	ASTM D5116 RATE: LESS THAN 0.02 MG/M <sup>2</sup> /HR (7 DAYS)	ASTM D5116 RATE: LESS THAN 0.02 MG/M <sup>2</sup> /HR (7 DAYS)	ASTM D5116 RATE: LESS THAN 0.02 MG/M <sup>2</sup> /HR (7 DAYS)
VOC EMISSIONS (ECHOPANEL® PRINTED)	ASTM D5116 RATE: LESS THAN 0.093 MG/M <sup>2</sup> /HR (7 DAYS)	ASTM D5116 RATE: LESS THAN 0.093 MG/M <sup>2</sup> /HR (7 DAYS)	ASTM D5116 RATE: LESS THAN 0.093 MG/M <sup>2</sup> /HR (7 DAYS)
ENVIRONMENTAL (ECHOPANEL® UNPRINTED)	GREEN TAG CERTIFICATION GREEN RATE: LEVEL A GREEN TAG HEALTH RATE: PLATINUM 	GREEN TAG CERTIFICATION GREEN RATE: LEVEL A GREEN TAG HEALTH RATE: PLATINUM 	GREEN TAG CERTIFICATION GREEN RATE: LEVEL A GREEN TAG HEALTH RATE: PLATINUM 
ENVIRONMENTAL (ECHOPANEL® PRINTED)	GREEN TAG CERTIFICATION GREEN RATE: LEVEL A GREEN TAG HEALTH RATE: GOLD 	GREEN TAG CERTIFICATION GREEN RATE: LEVEL A GREEN TAG HEALTH RATE: GOLD 	GREEN TAG CERTIFICATION GREEN RATE: LEVEL A GREEN TAG HEALTH RATE: GOLD 





# ECHOPANEL<sup>®</sup> PRECISION CUTS

EchoPanel<sup>®</sup> Longitude in colourway #330 and acoustic light in EchoPanel<sup>®</sup> Colourway #487

# ECHOPANEL® LONGITUDE



EchoPanel® Longitude in colourway #269

Designed By

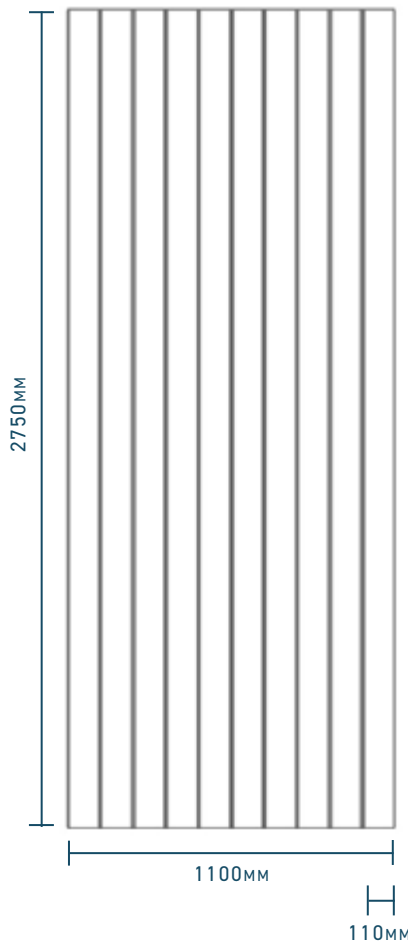
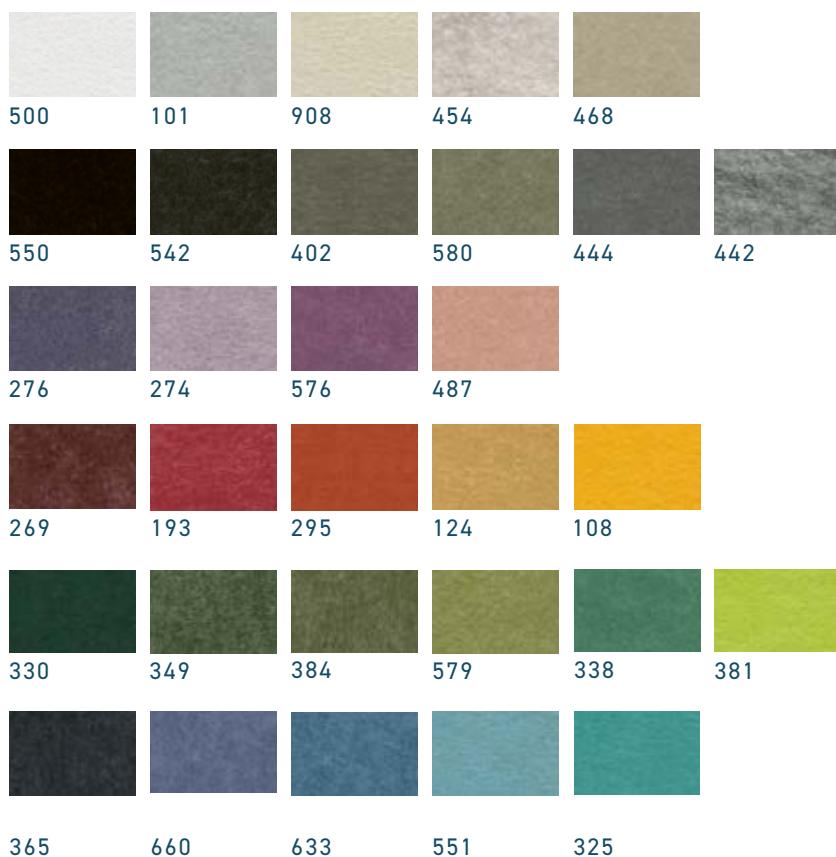
Woven Image

Panel Dimension

2750MM (+/-2MM) X 1100MM (+/-2MM) X 12MM (+/-7%)

Colours

Full **EchoPanel®** colour range



# ECHOPANEL® LATITUDE



EchoPanel® Latitude in colourway #384 and colourway #487

Designed By

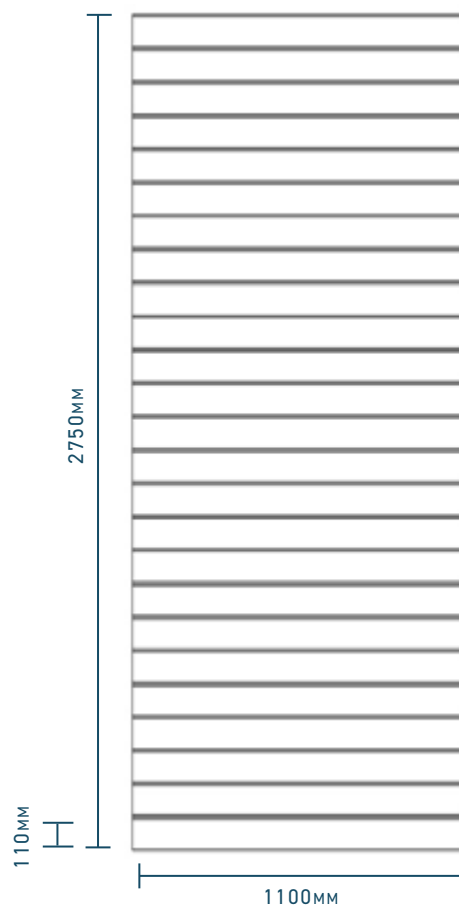
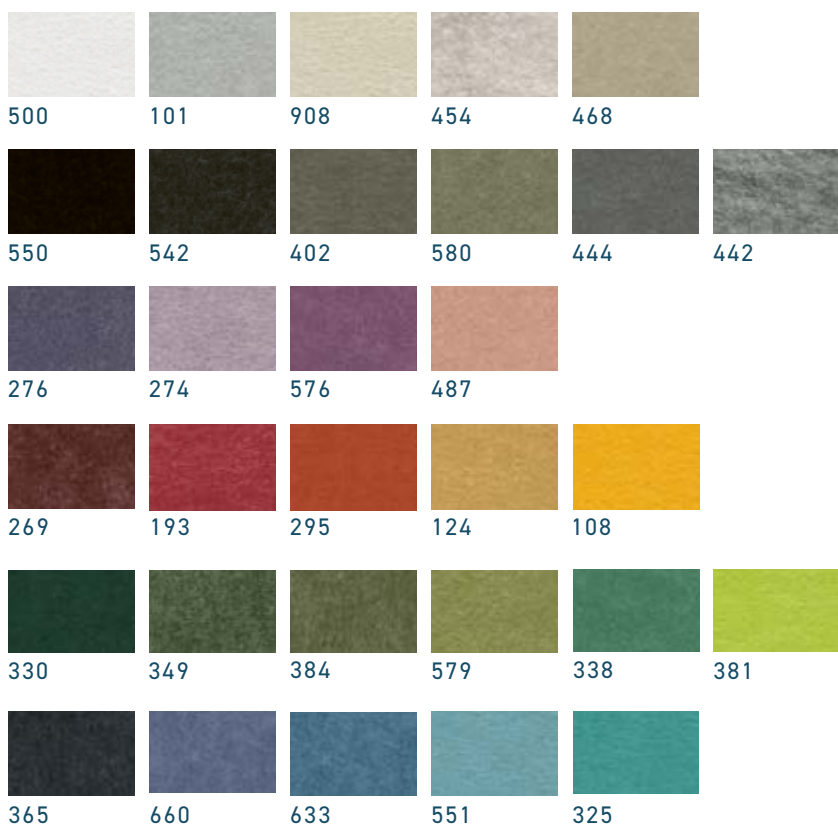
Woven Image

Panel Dimension

2750MM (+/-2MM) X 1100MM (+/-2MM) X 12MM (+/-7%)

Colours

Full **EchoPanel®** colour range





# ECHOPANEL® MERIDIAN



EchoPanel® Meridian in colourway #274

Designed By

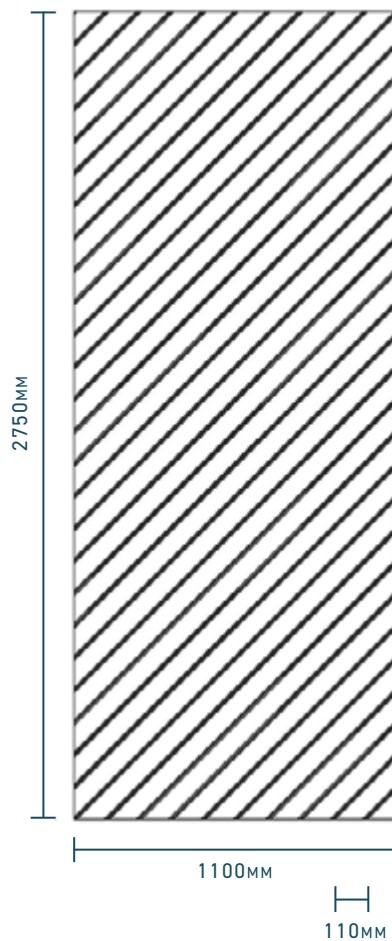
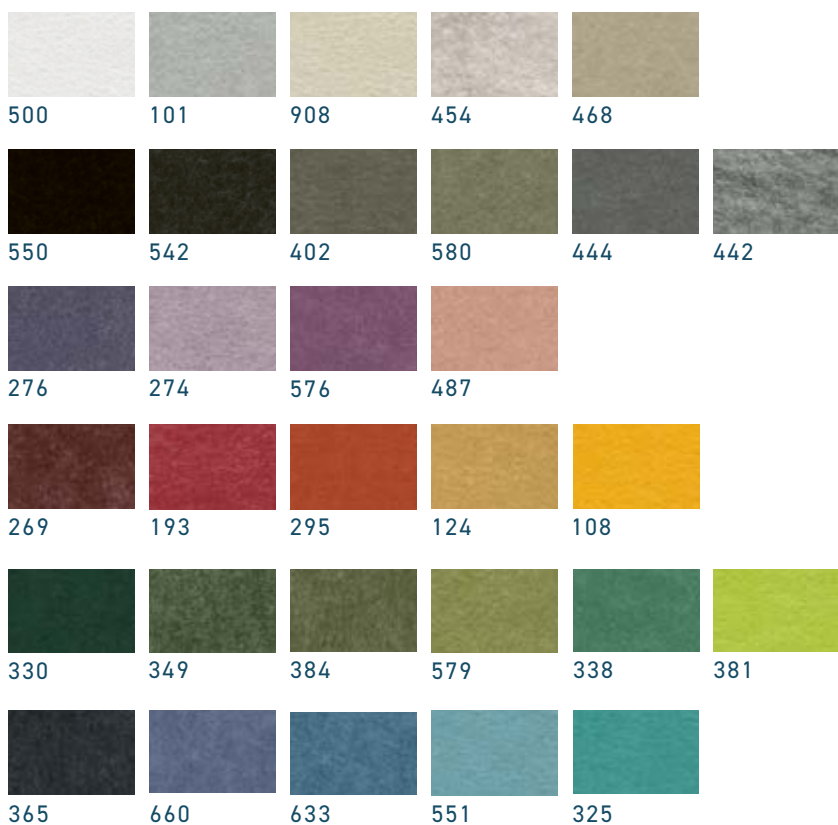
Woven Image

Panel Dimension

2750MM (+/-2MM) X 1100MM (+/-2MM) X 12MM (+/-7%)

Colours

Full EchoPanel® colour range





# ECHOPANEL® PRINTS

EchoPanel® Trio in colourway #365 & wall-applied EchoPanel® 12mm in colourway #365



# ECHOPANEL® ASTRO



EchoPanel® Astro in colourway #907

Designed By

Woven Image

Panel Dimensions

2800MM (+/-10MM) X 1200MM (+/-5MM) X 12MM (+/-7%)

Pattern Repeat

Horizontal: 107MM, Vertical: 173MM

Print

Double sided

Print Tolerance

Horizontal: +/-10MM, Vertical: +/-10MM



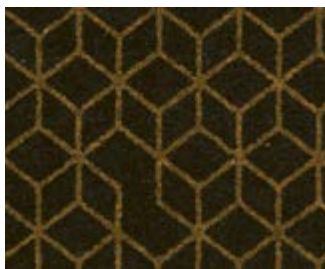
270 (Pearlescent ink)



462 (Pearlescent ink)



489 (Pearlescent ink)



548 (Pearlescent ink)



907

See page 8 for additional specifications and performance details, or visit [www.wovenimage.com](http://www.wovenimage.com) for detailed print layout information.



# ECHOPANEL® TRIO



EchoPanel® Trio in colourway #381

Designed By	Woven Image
Panel Dimensions	2800MM (+/-10MM) X 1200MM (+/-5MM) X 12MM (+/-7%)
Pattern Repeat	Horizontal: 65MM, Vertical: 65MM
Print	Double sided
Print Tolerance	Horizontal: +/-10MM, Vertical: +/-10MM



381



315 (Pearlescent ink)



365 (Pearlescent ink)



100



500

See page 8 for additional specifications and performance details, or visit [www.wovenimage.com](http://www.wovenimage.com) for detailed print layout information.

# ECHOPANEL® FREQUENCY



EchoPanel® 12MM Frequency in colourway #544

Designed By

Woven Image

Panel Dimension

- 7MM Panel: 2800MM (+/-10MM) X 1200MM (+/-5MM) X 7MM (+/-7%)
- 12MM Panel: 2800MM (+/-10MM) X 1200MM (+/-5MM) X 12MM (+/-7%)

Pattern Repeat

Horizontal: 300MM, Vertical: 320MM (HALF DROP)

Print

7MM Panel: One sided  
12MM Panel: Double sided

Print Tolerance

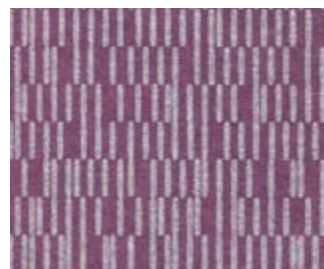
Horizontal: +/-10MM, Vertical: +/-10MM



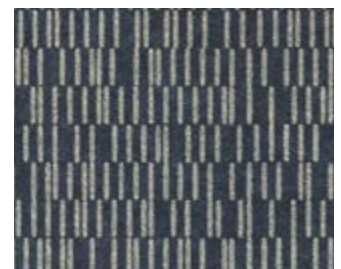
100 ●



101 (Pearlescent ink) ● ●



213 (Pearlescent ink) ●



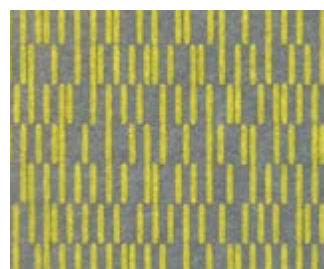
301 (Pearlescent ink) ●



544 (Pearlescent ink) ● ●



577 ●



612 ●



641 (Pearlescent ink) ● ●

See page 8 for additional specifications and performance details, or visit [www.wovenimage.com](http://www.wovenimage.com) for detailed print layout information.



# ECHOPANEL® TILT



EchoPanel® Tilt colourway #402

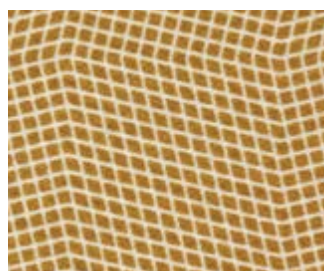
Designed By	Woven Image
Panel Dimension	2800MM (+/-10MM) X 1200MM (+/-5MM) X 12MM (+/-7%)
Pattern Repeat	Horizontal: 128MM, Vertical: 128MM
Print	Double sided
Print Tolerance	Horizontal: +/-10MM, Vertical: +/-10MM



501



402



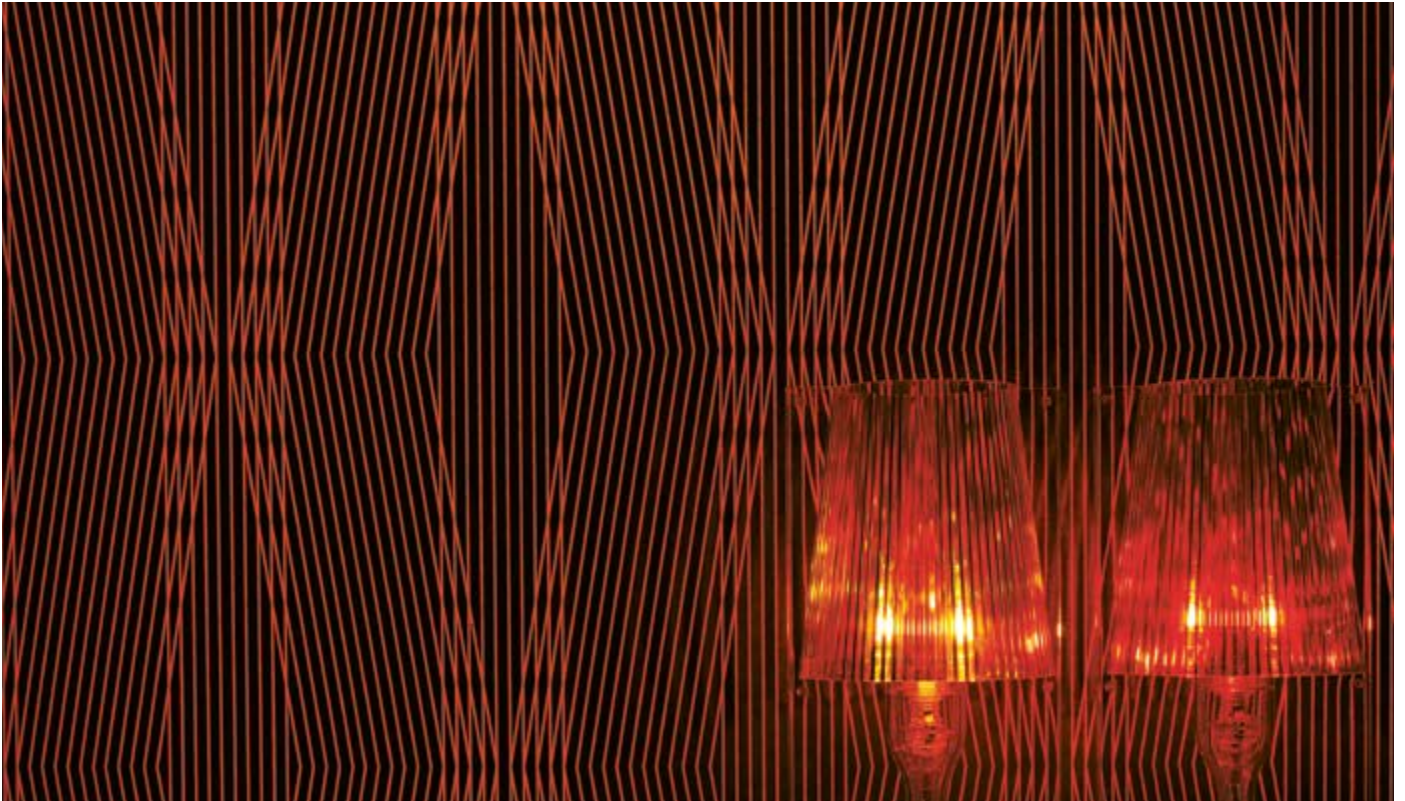
131 (Pearlescent ink)



545



# ECHOPANEL® TRAPEZE



EchoPanel® Trapeze in colours #150 under UV lighting

Designed By	Woven Image
Panel Dimension	2800MM (+/-10MM) X 1200MM (+/-5MM) X 12MM (+/-7%)
Pattern Repeat	Horizontal: 400MM, Vertical: 590MM
Print	Double sided
Print Tolerance	Horizontal: +/-10MM, Vertical: +/-10MM



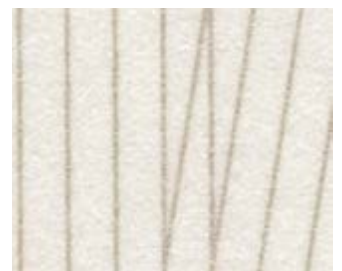
150 (Fluorescent)



443



107 (Fluorescent)



454 (Pearlescent ink)

See page 8 for additional specifications and performance details, or visit [www.wovenimage.com](http://www.wovenimage.com) for detailed print layout information.

# ECHOPANEL® HEX



EchoPanel® Hex in colourway #442

Designed By	Bang Design for Woven Image
Panel Dimensions	2800MM (+/-10MM) X 1200MM (+/-5MM) X 12MM (+/-7%)
Pattern Repeat	Horizontal: 74MM, Vertical: 130MM
Print	Double sided
Print Tolerance	Horizontal: +/-10MM, Vertical: +/-10MM



444



111



542





# ECHOPANEL® RANGE

EchoPanel® Trio in colourway #381. EchoPanel® Dot pendent in colourway #101. EchoPanel® 12mm pendent in colourways #381 & #442



# ECHOPANEL® ACOUSTIC TILES



Oblong tiles in colourway #542

EchoPanel® Acoustic Tiles are the perfect product range for designers looking to achieve acoustic function with a quality design. The portfolio boasts an extensive range of solid colours and pattern-matched printed, cut and 3D formed tiles, providing an endless stream of design configurations.

For more information about Acoustic Tiles, please contact your Woven Image representative or visit us online.



Balance 1300 and 325 acoustic tile in colourway #454 and #384

# ECHOPANEL® ELEMENT



EchoPanel® Element in colourway #365 (ceiling) and EchoPanel® Longitude in colourway #101 (wall)

EchoPanel® Element is a practical, design-led acoustic ceiling solution. It's easy to install, fixing directly to a ceiling or attaching to a ceiling grid using cleverly designed translucent clips for a completely seamless finish.

There is also the option to order a suspension kit solution, allowing EchoPanel® Element to appear to float, creating a design focus, as well as providing an acoustic baffle. There are ten different colourways available, all chosen to enhance a variety of contemporary commercial interior settings.

For more information about EchoPanel® Element, please contact your Woven Image representative or visit us online.



EchoPanel® Element #330 suspended



EchoPanel® Element #101 clipped to ceiling grid

# ECHOPANEL® INLINE



EchoPanel® Inline in colourway #336 and #340

EchoPanel® Inline is a suspended acoustic ceiling solution that creates a design focus whilst reducing reverberated noise in shared spaces. The product consists of three printed panels and all hanging components, including a unique adjustable cable stopper that enables panels to be suspended at various heights above one another. The panels are printed with an elegant gold keyline and are available in three colourways; Onyx, Ivy and Indigo.

Horizontal hanging component kits can also be purchased separately, allowing designers to suspend 24MM EchoPanel® in a multitude of creative configurations.

For more information about EchoPanel® Inline or our horizontal hanging kit, please contact your Woven Image representative or visit us online.



Image shows horizontal hanging components



Echopanel® inline in colourway #340



# ECHOPANEL® ADAPT



EchoPanel® Adapt Classic in colourway #365 and cream desk clamps

EchoPanel® Adapt workstation screens are available in two different sizes (Adapt Classic: 1790MM x 780MM and Adapt Social: 1790MM x 544MM). They are pinnable, provide privacy and assist in reducing reverberated noise in work spaces. Choose from 10 colours in the EchoPanel® 24MM range.

They are easy to install using our unique desk clamps which are available in charcoal (#542) and cream (#908) colourways. For more information about workstation screens, please contact your Woven Image representative or visit us online.



EchoPanel® Adapt Social in colourway #542 and charcoal desk clamps

# ECHOPANEL® SPACE DIVIDING SYSTEMS



Tandem pendants in colourway #551

EchoPanel® Space Dividers allow designers to stylishly define areas within open-plan spaces, whilst delivering privacy and acoustic control. The range includes ceiling-suspended pendants and free-standing space dividers.

For more information about Space Dividers, please contact your Woven Image representative or visit us online.



Paling space divider in colourway #542 with copper and chrome joiners



