



Woven Image®

EchoPanel® Mura





WHAT IS ECHOPANEL®MURA?

EchoPanel®Mura is an innovative wall covering that is design driven, cost effective and easy to install. It contains 60% post consumer recycled content with a low VOC.

EchoPanel®Mura is 1.9mm thick, which contributes to added acoustic properties. The face side has been designed to create a smooth clean designer look whilst the back has been engineered with a forgiving texture that can be adhered to a variety of surfaces. **EchoPanel®Mura** delivers an enriched finish that challenges the perception of traditional wall covering.

KEY APPLICATIONS

EchoPanel®Mura is designed as a wall covering for sustainable interiors used in:

- commercial offices
- hotels
- restaurants
- retail
- education
- apartments
- residential
- Cinemas, theaters and auditoriums

EchoPanel®Mura is ideal as:

- An added acoustic floor to ceiling wall covering
- A workstation screen fabric
- An operable wall / partition cover

KEY BENEFITS

Easy installation.

EchoPanel®Mura is light weight, easy to handle, adhere and install.

We recommend a professional wall covering installer for optimum results.

For an application guide and “how to” video visit wovenimage.com

Seamless finish.

When double cut the texture of **EchoPanel®Mura** allows seams to become almost invisible as the fine fibres of **EchoPanel®Mura** interlock on a micro scale. Available as a continuous 25m roll, **EchoPanel®Mura** is ideal for high floor to ceiling installations.

Flexible Design.

EchoPanel®Mura is a surface in itself with significant design potential to enable designers and manufacturers to redefine, reinvent and reconfigure interior spaces.

Cost Effective.

Compared to other wall finishes **EchoPanel®Mura** is an extremely price competitive solution.

Flame Resistance.

AS 3837: Group 1
(Adhered to plasterboard)
BS 476 Part 7: Class 2
(Adhered to Gyprock EC08™ Fire)
ASTM E84: Class 1
(adhered to Gyprock EC08™ Fire)

Improved Interiors.

EchoPanel®Mura has acoustic benefits tested by RMIT to AS ISO 354-2006. It also achieves outstanding commercial performance results against Australian and International standards.

Ideal Print And Emboss Surface.

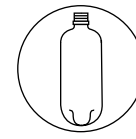
EchoPanel®Mura is available printed in an array of colourways and designs. It is also available embossed providing a subtle textured result. The perfect solution for adding contemporary design to an interior space.

ENVIRONMENTALLY SUSTAINABLE

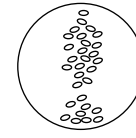
EchoPanel®Mura is another landmark product from Woven Image. It demonstrates our ongoing commitment to environmental performance and sustainable interiors.

EchoPanel®Mura is a low VOC product made from recycled and recyclable PET (approximately 60% post consumer waste such as recycled PET bottles). The base fibre is certified to Oeko-tex Standard 100 for meeting humanecological requirements, recognised by TESTex Zurich, Swiss Textile Institute.

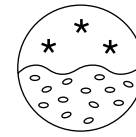
EchoPanel®Mura is manufactured in a way that no waste is created. Source fibre that is not transformed into useful product is collected and re-used ie. post-industrial recycling.



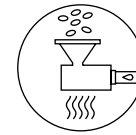
1. Soft drink and detergent bottles made from PET identified by are collected from consumers



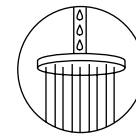
2. Contaminants like lids and sticky labels are removed. Bottles are chipped into tiny pellets



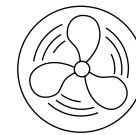
3. Pellets are washed and sanitised



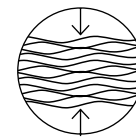
4. Pellets and colour are fed into a hopper. A heater at the base of the hopper melts the pellets to form a free flowing resin



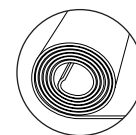
5. Resin is pumped through a sophisticated shower-rose device, known as a spinneret



6. Cold air fans 'set' the fine fibres extruded from the spinneret



7. Fibres are drawn and cut and are blended into a web



8. Web is compressed ready for use

EchoPanel® Mura

Specifications

Product Name	EchoPanel® Mura
Designer	Woven Image
Origin	Australia
Composition	100% PET (60% recycled)
Weight	423.5g/lin.m, 350g/m ²
Thickness	1.9mm +/- 0.25mm
Width	1210mm
Piece Length	Approx. 25m roll
Fabric Protection	Available on request

Performance

Colour Fastness to Light	ISO 105 B02 Rating: 6
Colour Fastness to Rubbing	ISO 105 - X12 Rating: Wet: 5, Dry: 5
Fire Test	AS3837 Classification: Group 1 (adhered to plasterboard) BS476 Part 7: Class 2 (adhered to Gyprock EC08™ Fire) ASTM E84: Class 1 (adhered to plasterboard)
Acoustics	AS/ISO 354 2006 NRC Value:0.10

Use



VOC Emissions

ASTM D5116
Rate: < 0.02mg/m²/hr (7 days)



Enviromental





EchoPanel® Mura

Roll Dimensions: 1210mm (wide) x 25mtrs (long) x 1.9mm (Thick)

Pattern Repeat: *Biline ONLY - Embossed Vertical Stripe. Horizontal Repeat: 29.5cm

See Page 2 for additional Specifications & Performance details.



258



151



108



542



273



361



442



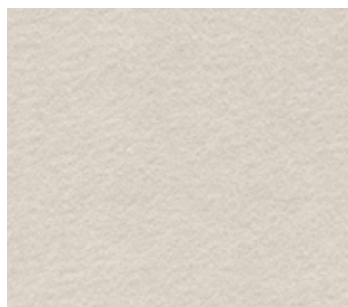
444



402



454



908



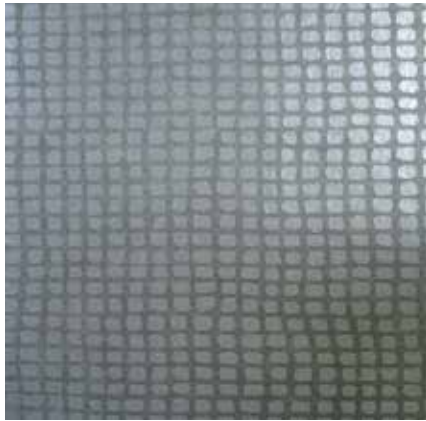
*Biline 454 (Embossed Vertical Stripe)

EchoPanel® Mura Kome & Mura Haku

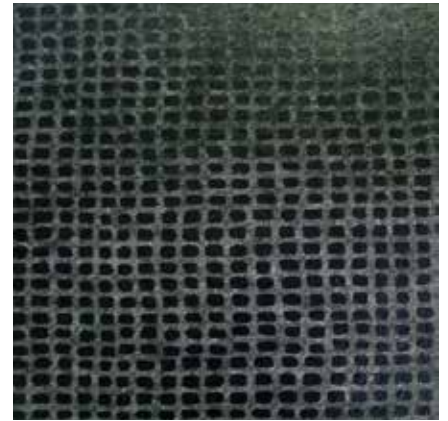
Designer: Akira Isogawa
Pattern Repeat: Vertical: 72cm, Horizontal: 116cm
Roll Dimensions: 1210mm (wide) x 25mtrs (long) x 1.9mm (Thick)
*See Page 2 for additional Specifications & Performance details.



Kome 500 (Matte finish)



Haku 447 (Metalic finish)



Haku 554 (Gloss finish)

EchoPanel® Mura Nami

Designer: Akira Isogawa
Pattern Repeat: Vertical: 72cm, Horizontal: 116cm
Roll Dimensions: 1210mm (wide) x 25mtrs (long) x 1.9mm (Thick)
*See Page 2 for additional Specifications & Performance details.



Nami 440



Nami 500



Featured in image above: screens covered in EchoPanel Mura Nami 500, Chair upholstered in Botan 440
*Botan is an upholstery fabric, this is not a Mura wallcovering.

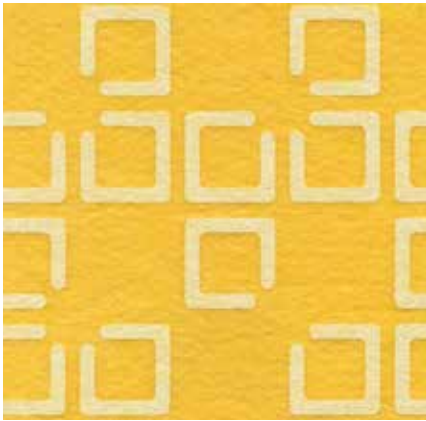


EchoPanel® Mura Quattro

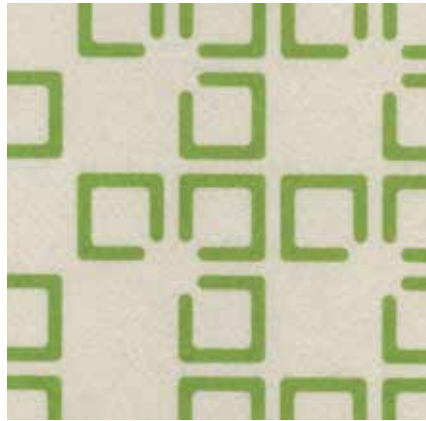
Pattern Repeat: Vertical: 75cm, Horizontal: 58cm

Roll Dimensions: 1210mm (wide) x 25mtrs (long) x 1.9mm (Thick)

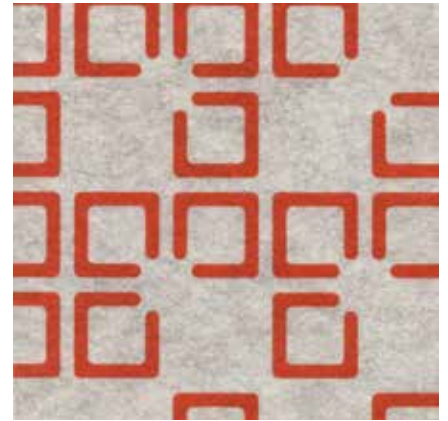
*See Page 2 for additional Specifications & Performance details.



108



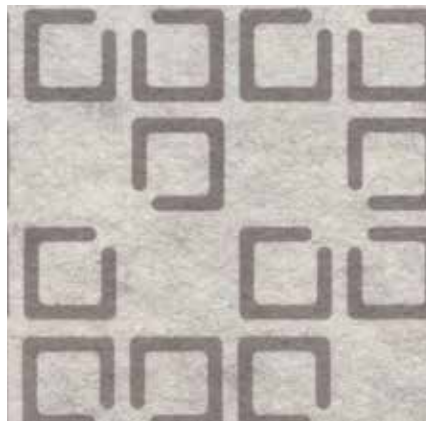
362



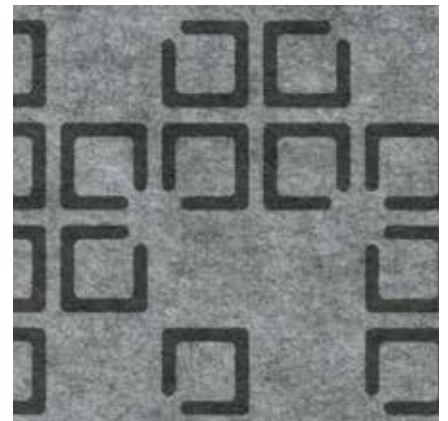
177



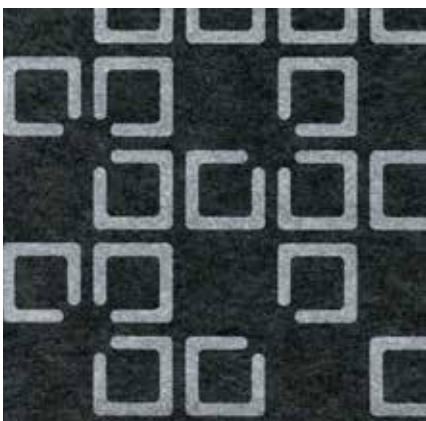
468



470



447



545



EchoPanel® Mura Otto

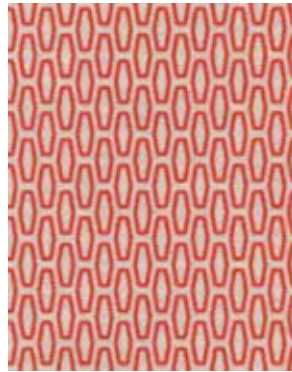
Pattern Repeat: Vertical: 2cm, Horizontal: 1.5cm

Roll Dimensions: 1210mm (wide) x 25mtrs (long) x 1.9mm (Thick)

*See Page 2 for additional Specifications & Performance details.



108



258



273



362



404



468



141



447





EchoPanel® Mura Jaali

Pattern Repeat: Vertical: 69cm, Horizontal: 58cm

Roll Dimensions: 1210mm (wide) x 25mtrs (long) x 1.9mm (Thick)

*See Page 2 for additional Specifications & Performance details.



177



361



500



454



541

Mura Dune Tile & Mura Wave Tile

Both designs available in all 8 colours

See Page 8 for additional Specifications & Performance details.



258



151



108



542



273



361



444



908



Mura Dune Tile



Mura Wave Tile





WHAT IS MURA TILE

A sustainable, contemporary designed acoustic wall solution from Woven Image.

MURA TILE KEY APPLICATIONS

Mura Tile is designed for vertical surface applications:

- commercial
- office
- education
- retail
- hospitality
- government
- residential

MURA TILE KEY BENEFITS

Multi Coloured Design Potential
Mura Dune Tile and Mura Wave Tile can be combined in multiple complementary colours or design configurations to achieve unique and colourful contemporary interiors.

A Lighter Product

At approximately 360 grams per tile, Mura Tile is extremely light weight, allowing a diverse range of applications.

Mura Tile is bonded and thermally formed made from 100% PET it is demountable and fully recyclable.

Environmentally Sustainable

Mura Tile is another landmark product from Woven Image. It demonstrates our ongoing commitment to environmental performance and sustainable interiors.

- Mura Tile is produced from recycled and recyclable PET
- Mura Tile is GreenTag certified
- Mura Tile is a low VOC product
- As Mura Tile is the finished surface in itself, dematerialisation becomes easy; through the elimination of the older 'combined fabric and wood' wall panel, screens, and partitions systems

Easy Installation

Mura Tile can be fixed by nail or screw using the custom designed Woven Image Clips and Template included in each box of 9 tiles.

Tiles are also easily interchangeable when you desire a change in colour or design.

Dune 50mm






Wave 60mm



Specifications

Product Name	Mura Tile
Designer	Bang Design
Origin	Australia
Composition	100% PET (45% recycled)
Weight	360 grams per tile +/- 10%
Thickness	1.9mm +/- 0.25mm
Width	4.0mm +/- 0.5mm (measured to 10mm above trimmed edge)
Tile Dimensions	Dune: 500mm x 500mm (+/-2mm) x 50mm (+/-2.5mm) Wave: 500mm x 500mm (+/-2mm) x 60mm (+/-2.5mm)

Performance

Colour Fastness to Light	ISO 105 B02 Rating: 6
Fire Test	AS3837 Classification: Group 3 BS476 Part 7: Class 2Y ASTM E84: Class 1
Care	see website for details
Sound Absorption	ASTM C423 - 90A Mura Dune Tile: NRC Value: 0.60 (no air gap) Mura Wave Tile: NRC Value: 0.55 (no air gap)
VOC Emissions	ASTM D5116 Rate: <0.07mg/m ² /hour (7days)
Use	
Environmental	 

EchoPanel® Mura Tile Suspended System

Full screen size 1500mm X 1500mm



Easy Installation

Mura Tile hanging system can be suspended from the ceiling and fixed to the floor or left floating. This custom designed system provides for flexible easy installation. It is designed for 500x500mm Woven Image Mura Tiles only.

Secure Fixings

The wire system is designed to hold 4 beams and 9 tiles per side, but can withstand a maximum weight of 7 beams and 18 tiles per side- 30kg max.

The fixing is the responsibility of a qualified installer. Woven image will not be responsible for failure of incorrect fixing.

Contents of the System

Top/ Bottom beam x 2
 Middle beams x 2
 Wire hanger components x 2
 Clear corner clips x 4
 Wire clamp screws x 16

Mura Dune Tile/ Mura Wave Tile

500mm x 500mm formed tile
 9 per box, coverage 2.25m²

Visit wovenimage.com for full specification and assembly instructions.



