

# ZINTRA 24MM ACOUSTIC PANEL

Acoustics » Acoustic Panels

---

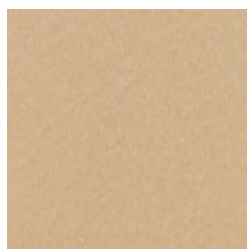


Brand: **Zintra**

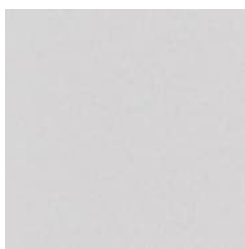
# ZINTRA 24MM ACOUSTIC PANEL

Acoustics » Acoustic Panels

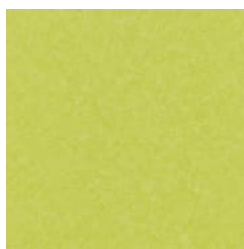
---



ECRU/TAUPE



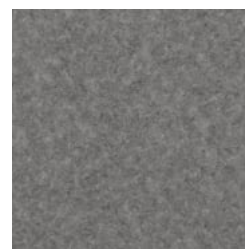
FROST/WHITE



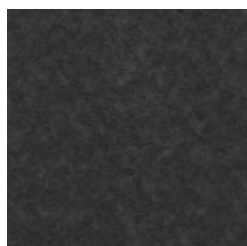
GRASS/LIME



PEBBLE



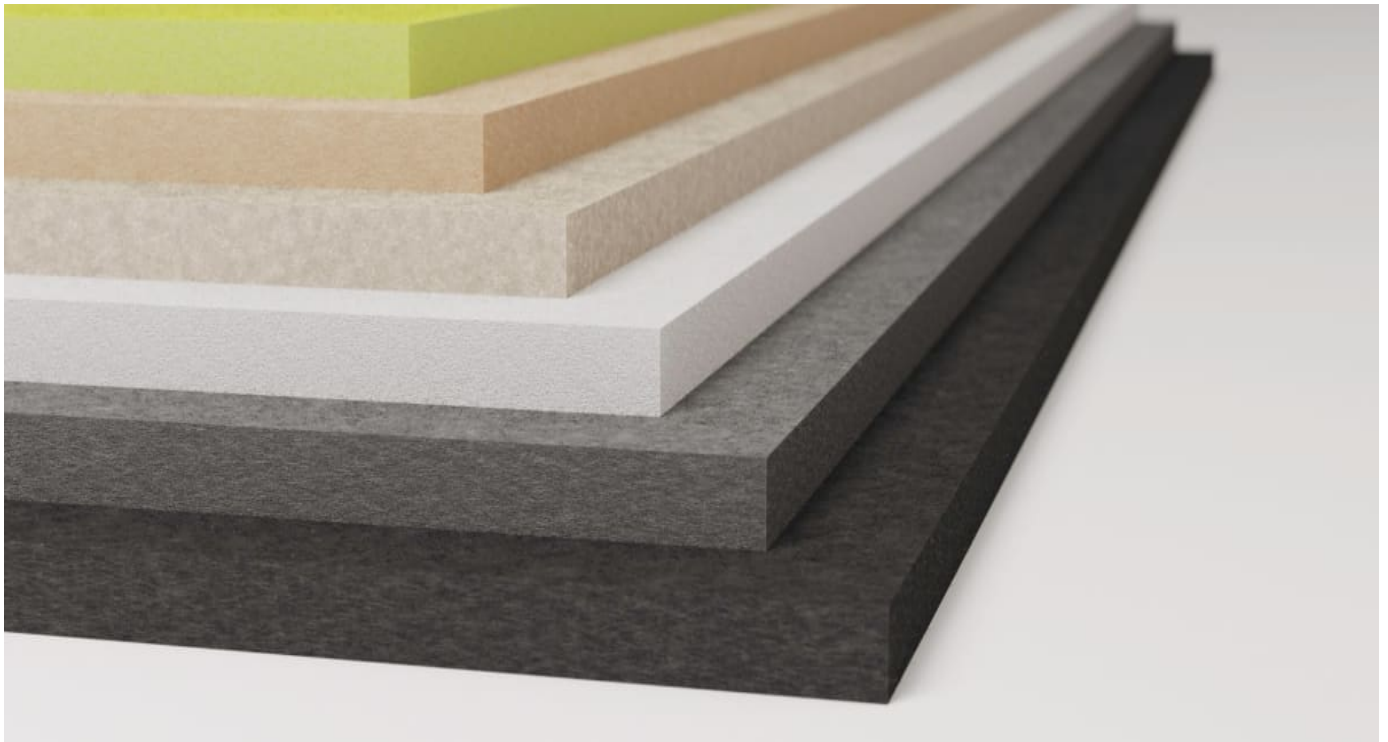
PEWTER/GREY



SLATE / ASH

# ZINTRA 24MM ACOUSTIC PANEL

Acoustics » Acoustic Panels



Zintra Acoustic Panel is the perfect solution for your application where acoustic performance and aesthetics are required. Available in 6 colours.

- Absorbs Noise
- Bleach Cleanable
- Environmentally Friendly
- Extended Warranty
- Solution Dyed Yarns
- Easy Fabrication
- Easy Install

## Description

Zintra's wide range of colours and ease of use make it the ideal material for commercial, hospitality and institutional projects. Zintra Acoustic Panel features include:

- \* Cost effective sound solution - NRC = 0.45 for 12mm, 0.75 for 24mm
- \* 2800mm long sheets ideal for join-free floor to ceiling applications
- \* Broad range of neutral and bright colours
- \* Suitable for a multitude of applications - walls, ceilings, screens
- \* Easily fabricated and installed
- \* Pinnable

Find out more about the Benefits of Zintra and its NRC rating on the [DOWNLOAD](#) tab.

## Dimensions

2800mm x 1225mm x 24mm

# ZINTRA 24MM ACOUSTIC PANEL

Acoustics » Acoustic Panels

---

**Composition** Zintra Acoustic Panel - 100% Solution Dyed (Colour Through) Polyester. 2.3 kg/m<sup>2</sup>

---

**Finishes** Matt

---

**Environmental Info** Easily recycled through standard recycling channels

---

**Fire Rating** Tested in accordance with AS ISO 9705 2003 for the purpose of determining the Group Number classification required by the Building Code of Australia for the control of fire spread on interior wall and ceiling linings.

Classification - Group 1  
Specific Extinction - Less than 250m<sup>2</sup>/kg

---

**Warranty** 5-year warranty. Visit [baresque.com.au/about/faq/](https://baresque.com.au/about/faq/) for complete details.

---

**Lead Time**

- Held in stock in Australia. From receipt of full payment:
- Sydney, Melbourne, Brisbane: 3 working days
- Adelaide: 4 working days
- Perth: 5-working days

---

**Suggested Installation**

Be sure to support the panel during installation to avoid bowing or creasing.  
Adhere to substrate using contact adhesive, Liquid Nails or Z clips.  
Panel can also be mechanically fixed using details similar to glass fittings.  
Download the Handling and Installation guide for full instructions.

---

**Fabrication Techniques** Stanley knife and straight edge

---

**How to Specify** Colour

---

# ZINTRA 24MM ACOUSTIC PANEL

Acoustics » Acoustic Panels

---

## Care Instructions

Remove spills immediately using damp, clean cloth.

Dab Zintra with a clean, soft white cloth dampened with a mild solution of liquid detergent and warm water. Repeat using only clean water, then pat dry with a lint free cloth.

Avoid using wax polishes, solvents or concentrated abrasives. For more difficult stains, dampen a soft white cloth with a solution of household bleach (10% bleach / 90% water). Dab gently.

Repeat using only a clean, water dampened cloth to remove bleach concentration then pat dry with a lint free cloth.

Always test in an inconspicuous area first. If care instructions don't deliver the expected results, cease cleaning method immediately and contact Baresque for assistance.

---

## Customisable

The Zintra Acoustic Solutions range is customisable to your project. Please get in touch with your local contact for details.

---

## Additional Comments

NRC - 0.75 - 0.9 Indoor only. Not suitable as a free standing product.

---